



# Product Guide

High-Tech Hoses & Connection Systems

 **MASTERFLEX**  
Connecting Values



## Five good reasons why you should be a Masterflex customer

### About Masterflex

As a globally operating corporate group, Masterflex specialises in solving complex connection challenges. We can now boast over 25 years worth of experience in the development, manufacturing and processing of high-tech spiral hoses. Our in-depth material and technological expertise helps us turn the most sophisticated high performance plastics into real products, which set international standards. Our core values determine our work philosophy and connect us directly with the whole group.

### Masterflex – Connecting Values

#### 1 What makes us special

Customized hose solutions or products from stock? Whatever you require, we have the right products for your application. We solve connection tasks using high-tech plastics and technically sophisticated fabrics. Here lies our expertise and our passion. We offer added value for our customers with our many years of experience in the field of polymer materials, technically sophisticated fabrics and their processing. From the first on-site consultation and the status analysis through to the development and production of the suitable products - we're there to support you throughout the whole process with our innovative complete solutions.

[Custom-made & all from one supplier.](#)

#### 2 Why you can always count on us

You can always rely on the constantly high quality of our products. Our products meet even the most stringent of national and international standards. This is a basic demand we place on ourselves. Whether heat, cold, extreme conditions or exposure to chemicals, our products prove themselves through their incredible durability and the long-lasting safety they bring. No matter how good our products are now, we are always working on newer and better ones for the future.

[Your satisfaction is our greatest success.](#)

#### 3 We make it possible for you

We are as flexible as the very materials we use. We tackle any challenge, because extraordinary tasks require extraordinary solutions. And that's exactly what we offer. With our in-depth specialist know-how, we develop customized product solutions for your specific application situation. You need a product quickly, require an unusual combination of materials or a delivery "just in time"? With our quick reaction and delivery times, we're the perfect partner for you: [Because in our business, reliable connections mean much more.](#)

#### 4 We're there where you need us

We develop sophisticated and customized products with greater customer benefits. For this reason, our highly experienced sales team is spread worldwide, nearer to wherever you need us. As a fundamentally strong development partner, we have our eye on the market and develop cutting-edge solutions for your specific tasks. At all of our locations throughout the world, our products are manufactured with our renowned German Engineering. This guarantees high quality, short distances, quick reaction times and the direct connection to you, the customer.

[Consultation-oriented, personal, quick & expert - that makes the difference!](#)

#### 5 Quality, which speaks for itself

Visionary ideas drive us forwards and are the source of our own product developments and innovations. Our creations are produced with renowned German Engineering expertise. Our Sales, Engineering and Production Teams work seamlessly to provide you with the best results. This guarantees international quality standards, worldwide. Whatever we do, we always take great care of the environment. Resource-conserving processes and sustainability are our contribution to the environment.

[Products & Services from Masterflex - we create values ...and connect them!](#)

# Contents

Page

<b>1</b>	Abrasion-Proof Suction & Transport Hoses made from PU/ hardly inflammable	4-7
<b>2</b>	Suction & Transport Hoses made from PVC/EVA	8-9
<b>3</b>	Microbe & Hydrolysis Resistant Hoses	10-11
<b>4</b>	Food & Pharmaceutical Hoses	12-15
<b>5</b>	Antistatic & Electroconductive Hoses	16-19
<b>6</b>	Air-Conditioning, Ventilation & Welding Fumes Hoses	20-21
<b>7</b>	Exhaust Gas Hoses	22-24
<b>8</b>	Temperature Resistant Hoses to +1100 °C	25-29
<b>9</b>	Chemical Hoses	30-33
<b>10</b>	Customised Clip Hoses	33
<b>11</b>	Pneumatic Tubing	34-35
<b>12</b>	PU-Lined Pipes & Pipe-Bends	36
<b>13.1</b>	Installation & Connections (Clamps)	37-39
<b>13.2</b>	Installation & Connections (Plastic Connectors)	40-44
<b>13.3</b>	Installation & Connections (Metal Connectors)	45-48





## Abrasion-Proof Suction & Transport Hoses made from PU

# Suction & transport hoses made from polyurethane, especially suitable for abrasive transport goods, excellent durability

### Flamex B-Fse



PU Film Hose, light duty, highly flexible and compressible, hardly inflammable acc. to DIN 4102 B1

#### Applications

- Protective hose against mechanical wear
- Hardly inflammable (acc. to DIN 4102 B1) transport hose for abrasive solids
- Wood processing machines
- Shavings extractions in wood processing

#### Available in:

DN 40 - DN 400  
 Colour: transparent  
 Stock lengths: see internet  
 max. Production lengths:  
 25 m dep. on DN  
**Temperature Range**  
 -40 °C to +90 °C  
 peaks to +125 °C

### Flamex B-Fse CNC



PU Film Hose, light duty, highly flexible and compressible, hardly inflammable acc. to DIN 4102 B1

#### Applications

- hardly inflammable transport hose for abrasive solids
- Wood processing machinery
- Wood-chip extraction/suction on CNC controlled processing machines
- Extraction/suction units with greater suction performance
- Protective hose against mechanical loads/wear

#### Available in:

DN 200 - DN 400  
 Colour: transparent  
 Stock lengths: see website  
 max. production length: 25 m  
 dep. DN  
**Temperature Range**  
 -40 °C to +90 °C  
 peaks to +125 °C

### Flamex Bse



PU Suction & Transport Hose, lightweight & flexible, hardly inflammable acc. to DIN 4102 B1

#### Applications

- Protective hose against mechanical wear
- Hardly inflammable (acc. to DIN 4102 B1) transport hose for abrasive solids
- Wood processing machines
- Shavings extractions in wood processing

#### Available in:

DN 40 - DN 500  
 Colour: transparent  
 Stock lengths: 10 m, dep. on DN  
 max. Production lengths:  
 25 m dep. on DN  
**Temperature Range**  
 -40 °C to +90 °C  
 peaks to +125 °C

# Abrasion-Proof Suction & Transport Hoses made from PU

## Master-PUR LF Trivolution



PU Suction & Transport Hose, very lightweight, permanent antistatic, surface resistance <math> < 10^9 </math> Ohm, microbe-resistant, hardly inflammable

### Applications

- Highly flexible spiral hose for suction and transport of abrasive solids, liquids and gases, fine-grained particles, e.g. dust and powder
- Protective hose against mechanical wear
- Oil mist extraction/suction
- Hardly inflammable acc. to DIN 4102 B1

### Available in:

DN 40 - DN 400  
 Colour: transparent  
 Stock lengths: see Internet max. Production lengths: 25 m dep. on DN  
**Temperature Range**  
 -40 °C to +90 °C  
 peaks to +125 °C

## Master-PUR L Trivolution



PU Suction & Transport Hose, highly flexible, permanent antistatic, surface resistance <math> < 10^9 </math> Ohm, microbe-resistant, hardly inflammable

### Applications

- Highly flexible spiral hose for suction and transport of abrasive solids, liquids and gases, fine-grained particles, e.g. dust and powder
- Suction/extraction of paper and textile fibres
- Protective hose against mechanical wear
- Oil mist extraction/suction
- Hardly inflammable acc. to DIN 4102 B1

### Available in:

DN 25 - DN 500  
 Colour: transparent  
 Stock lengths: see Internet max. Production lengths: 25 m dep. on DN  
**Temperature Range**  
 -40 °C to +90 °C  
 peaks to +125 °C

## Master-PUR H Trivolution



PU Suction & Transport Hose, flexible, permanent antistatic, surface resistance <math> < 10^9 </math> Ohm, microbe-resistant, hardly inflammable

### Applications

- Suction/transport of abrasive solids, paper fibres, granules, gases, liquids, rough-grained media with a high flow-rate, e.g. wood shavings
- Standard hose for industrial vacuum cleaners and granule conveyors
- Oil mist extraction/suction
- Hardly inflammable acc. to DIN 4102 B1

### Available in:

DN 13 - DN 500  
 Colour: transparent  
 Stock lengths: see Internet max. Production lengths: 25 m dep. on DN  
**Temperature Range**  
 -40 °C to +90 °C  
 peaks to +125 °C

## Master-PUR HÜ Trivolution



PU Suction & Transport Hose, flexible, permanent antistatic, surface resistance <math> < 10^9 </math> Ohm, microbe-resistant, hardly inflammable

### Applications

- Protective hose against mechanical wear
- Transport hose for greater requirements
- Specially designed for use in dry suction vehicles; light, flexible head hose
- Hardly inflammable acc. to DIN 4102 B1

### Available in:

DN 100 - DN 150  
 Colour: transparent  
 Stock lengths: see Internet max. Production lengths: 25 m dep. on DN  
**Temperature Range**  
 -40 °C to +90 °C  
 peaks to +125 °C

## Master-PUR HÜ S Trivolution



PU Suction & Transport Hose, flexible, permanent antistatic, surface resistance <math> < 10^9 </math> Ohm, microbe-resistant, hardly inflammable

### Applications

- Protective hose against mechanical wear
- Reinforced special hose for use on dry suction vehicles, medium-weight, flexible head hose
- Hardly inflammable acc. to DIN 4102 B1

### Available in:

DN 100 - DN 150  
 Colour: transparent  
 Stock lengths: see Internet max. Production lengths: 25 m dep. on DN  
**Temperature Range**  
 -40 °C to +90 °C  
 peaks to +125 °C

# Abrasion-Proof Suction & Transport Hoses made from PU

## Master-PUR HX Trivolution



PU Suction & Transport Hose, abrasion/vacuum-resistant, reinforced, permanent antistatic, <math>10^9</math> Ohm, microbe-resistant, hardly inflammable

### Applications

- Suction & transport hose for silo vehicles, loading stations, flat-roof gravelling, extremely abrasive media, problematic transport goods such as sand, gravel, grain, etc.
- Excellent for greater durability and longer maintenance intervals
- Hardly inflammable acc. to DIN 4102 B1

### Available in:

DN 32 - DN 300  
 Colour: transparent  
 Stock lengths: see internet max. Production lengths: 20 m dep. on DN  
**Temperature Range**  
 -40 °C to +90 °C  
 peaks to +125 °C

## Master-PUR HX S



PU Suction & Transport Hose, extremely abrasion/vacuum-resistant, smooth inner lining, permanent antistatic, <math>10^9</math> Ohm, microbe-resistant

### Applications

- Flat-roof gravelling, roof greening, vacuum/suction vehicles, maintenance of railway tracks, transport of glass wool, stone wool, slag, mill scale and sintered materials
- Suction and transport hose for quarries, cement works, shipyards, docks
- Working hose for silo vehicles and cargo depots

### Available in:

DN 50 - DN 150  
 Colour: transparent  
 Stock lengths: see internet max. Production lengths: 20 m dep. on DN  
**Temperature Range**  
 -40 °C to +90 °C  
 peaks to +125 °C

## Master-PUR Performance



PU Suction & Transport Hose, extremely abrasion/vacuum-resistant, totally smooth inner lining, permanent antistatic, <math>10^9</math> Ohm, microbe-resistant

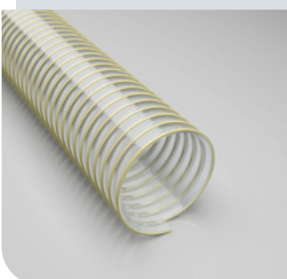
### Applications

- Transport hose for problematic media, e.g. sand, gravel, grain, granules, as well as for conveyance, handling and loading plants
- Everywhere where easy-to-clean surfaces are required
- Suction and transport hose for extremely abrasive solid, liquid and gaseous media
- Transport hose for glass works, steelworks, quarries, shipyards, docks, flat-roof gravelling, etc.

### Available in:

DN 38 - DN 200  
 Colour: transparent  
 Stock lengths: see internet max. Production lengths: 10 m dep. on DN  
**Temperature Range**  
 -40 °C to +90 °C  
 peaks to +125 °C

## Cargoflex



PU Suction & Transport Hose, extremely abrasion/vacuum-resistant, flexible

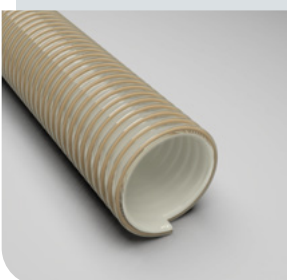
### Applications

- Suction/transport of highly abrasive goods, e.g. stone wool, gravel, stone, slag, mill scale, cement, glass splinters, sintered materials, materials from shipyards and docks.
- For highest standards of abrasion resistance and durability
- Suction & transport hose for the most extreme fields of application

### Available in:

DN 100 - DN 250  
 Colour: transparent  
 Stock lengths: see internet max. Production lengths: 20 m dep. on DN  
**Temperature Range**  
 -40 °C to +90 °C  
 peaks to +125 °C

## Master-PUR Inline



PU Suction & Transport Hose, extremely abrasion/vacuum-resistant, totally smooth inner lining, antistatic, <math>10^9</math> Ohm, microbe-resistant

### Applications

- Special hose for transport of extremely abrasive media
- Transport hose for problematic media, e.g. sand, gravel, grain, granules
- Everywhere where easy-to-clean surfaces are required
- Transport hose for glassworks, mineral processing plants, steelworks, quarries, shipyards, docks, cement works, flat roof gravelling, etc.
- Other conveyer and loading plants

### Available in:

DN 38 - DN 254  
 Colour: transparent  
 Stock lengths: see internet max. Production lengths: 10 m dep. on DN  
**Temperature Range**  
 -40 °C to +90 °C  
 peaks to +125 °C

# Abrasion-Proof Suction & Transport Hoses made from PU

## Polderflex PUR



PU Suction & Transport Hose, extremely abrasion/vacuum-resistant, smooth inside & outside

### Applications

- For the most extreme fields of application
- Transport of gravel, stones, for conveyor facilities
- Suction/extraction of glass splinters, glass wool, stone wool, slag, mill scale, sintered material
- Maintenance of railway tracks
- Quarries, cement-works, shipyards, docks, work hose for silo vehicles and loading stations

### Available in:

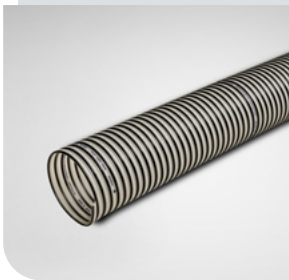
DN 32 - DN 150  
Colour: transparent  
Stock lengths: see internet max. Production lengths:

20 m dep. on DN

### Temperature Range

-40 °C to +90 °C  
peaks to +125 °C

## Master-PUR H Streetmaster Pro



PU Suction/Transport Hose, flexible, highly resistant to abrasion, vacuum, microbes and hydrolysis, with outside fold

### Applications

- higher abrasion resistance due to flow technical optimization (outer folding)
- Extraction/transport of abrasive solids, gaseous and particulate matter liquid media, granulates, paper-fibrous, coarse-grained media with high throughput, chips
- Oil mist extraction

### Available on request in:

DN 140 - DN 254  
Colour: transparent, partial colouring  
Stock lengths: see internet max. Production lengths:

20 m dep. on DN

### Temperature Range

-40 °C to +90 °C  
peaks to +125 °C

## Master-PUR Flat Food



Spiral-Free PU Transport Hose, medium duty, Food-grade quality (FDA)

### Applications

- Spiral-free transport hose for abrasive solids
- Application as compensator
- Solids transport for sieving machines
- Conductor hose on charging station

### Available in:

DN 50 - DN 300  
Colour: transparent  
Stock lengths: see internet max. Production lengths:

5 m dep. on DN

### Temperature Range

-40 °C to +90 °C  
peaks to +125 °C

## Master-PUR STEP



PU Film Hose, crush-resistant, highly flexible, hardly inflammable acc. to DIN 4102 B1

### Applications

- Suction & transport hose for abrasive solids, liquids and gases
- Ideal for floor-level areas where conventional hoses are subjected to rough conditions and can be permanently deformed
- Wood processing
- Protective Hose

### Available in:

DN 50 - DN 160  
Colour: hose wall transparent with blue spiral/helix  
Stock lengths: see internet max. Production lengths:

25 m dep. on DN

### Temperature Range

-40 °C to +90 °C  
peaks to +125 °C

## Miniflex PU



PU Protection & Suction Hose with plastic-coated wire helix, microbe-resistant, highly flexible

### Applications

- Protective hose against mechanical wear
- Cable protection hose
- Protective & suction hose for solids, liquids and gases
- Suction hose for fine-grained particles, e.g. dust, powders, fibres
- Ventilation (gauge pressure & low pressure range)
- Suction hose for handheld machines

### Available in:

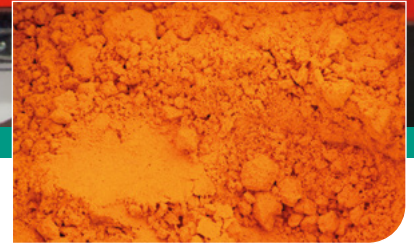
DN 7 - DN 50  
Colour: blue, RAL5015  
Stock lengths: see internet max. Production lengths:

50 m dep. on DN

### Temperature Range

-40 °C to +90 °C  
peaks to +125 °C

# 2



Suction & Transport Hoses  
made from PVC & EVA

**Suction & transport hoses made from PVC offer good chemical resistance. Hoses made from EVA are very lightweight, robust and crush-resistant**

## Master-PVC LF



PVC Film Hose,  
light duty,  
highly flexible

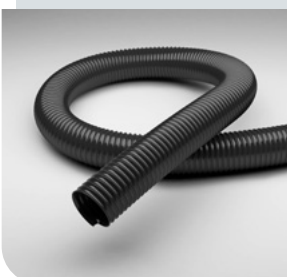
### Applications

- Transport of fine-grained particles, such as dust and powder
- Protective hose
- Liquid/fluid drainage
- Suction and transport hose for solid, liquid and gaseous media
- Ventilation and air-conditioning systems
- Dust removal
- Apparatus construction
- Spinning fibre extraction

### Order-specific production in:

DN 20 - DN 400  
 Colour: grey  
 Stock lengths: see internet  
 max. Production lengths:  
 25 m dep. on DN  
**Temperature Range**  
 -20 °C to +70 °C  
 peaks to +80 °C

## Master-PVC LF EL



PVC Film Hose,  
light duty,  
highly flexible,  
electroconductive,  
< 10<sup>6</sup> Ohm

### Applications

- Transport of fine-grained particles, such as dust and powder
- Suction and transport hose for solid, liquid and gaseous media
- Apparatus construction
- Danger zones, which require electrically conductive hoses
- Chemicals industry

### Available in:

DN 50 - DN 300  
 Colour: black  
 Stock lengths: see internet  
 max. Production lengths:  
 25 m dep. on DN  
**Temperature Range**  
 -20 °C to +70 °C  
 peaks to +80 °C

## Master PVC L



PVC Suction &  
Transport Hose,  
light duty,  
highly flexible

### Applications

- Transport of fine-grained particles, such as dust and powder
- Protective hose
- Liquid/fluid drainage
- Suction and transport hose for solid, liquid and gaseous media
- Ventilation and air-conditioning systems

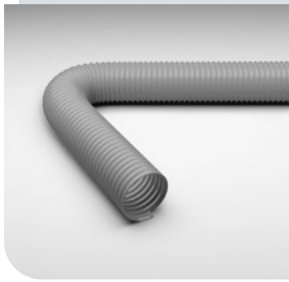
### Available in:

DN 38 - DN 500  
 Colour: grey  
 Stock lengths: see internet  
 max. Production lengths:  
 25 m dep. on DN  
**Temperature Range**  
 -20 °C to +70 °C  
 peaks to +80 °C



# Suction & Transport Hoses made from PVC & EVA

## Master-PVC HF



PVC Film Hose, medium duty, flexible

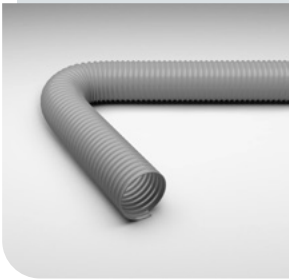
### Applications

- Transport of fine-grained particles, such as dust and powder
- Protective hose
- Liquid/fluid drainage
- Suction and transport hose for solid, liquid and gaseous media
- Ventilation and air-conditioning systems
- Dust removal
- Apparatus construction
- Spinning fibre extraction

### Order-specific production in:

DN 20 - DN 500  
 Colour: grey  
 max. Production lengths: 25 m dep. on DN  
**Temperature Range**  
 -20 °C to +70 °C  
 peaks to +80 °C

## Master-PVC H



PVC Suction & Transport Hose, medium duty, flexible

### Applications

- Transport of fine-grained particles, such as dust and powder
- Protective hose
- Liquid/fluid drainage
- Suction and transport hose for solid, liquid and gaseous media
- Ventilation and air-conditioning systems

### Available on request in:

DN 32 - DN 500  
 Colour: grey  
 max. Production lengths: 25 m dep. on DN  
**Temperature Range**  
 -20 °C to +70 °C  
 peaks to +80 °C

## Master-PVC Flex



PVC Suction & Transport Hose, light duty, highly flexible, reinforced

### Applications

- Transport of fine-grained particles, such as dust and powder
- Protective hose
- Liquid/fluid drainage
- Suction and transport hose for solid, liquid and gaseous media
- Ventilation & air-conditioning systems, boat & caravan manufacturing, machine manufacturing, construction drying, textile industry, vacuum cleaners, welding fume extraction

### Available in:

DN 25 - DN 102  
 Colour: black  
 Stock lengths: see internet  
 max. Production lengths: 15 m dep. on DN  
**Temperature Range**  
 0 °C to +70 °C  
 peaks to +85 °C

## Master-VAC



PE-EVA Suction & Transport Hose, light duty, crush-resistant

### Applications

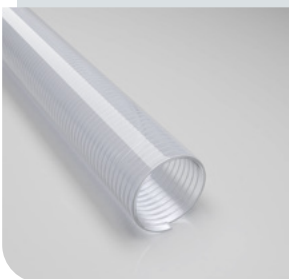
- Transport of fine-grained particles, such as dust and powder
- Protective hose
- Ventilation, swimming pool cleaning, chemicals industry
- Conveyance and suction of solid, liquid and gaseous media
- Dust removal units
- Lightweight industrial vacuum cleaners
- Handheld machines

### Available in:

DN 28 - DN 50  
 Colour: black  
 Stock lengths: see internet  
 max. Production lengths: 30 m dep. on DN  
**Temperature Range**  
 -40 °C to +60 °C  
 peaks to +70 °C

**TOP TIP:**  
 Also available as  
 electroconductive  
 EL version

## Polderflex-PVC



PVC Suction & Transport Hose, pressure/vacuum-proof, cadmium-free, flexible

### Applications

- Suction & transport hose for abrasive solids, liquids and gases
- Sewer cleaning
- Vacuum pumps
- Agriculture
- Construction industry
- Groundwater offtake

### Available in:

DN 12 - DN 152  
 Colour: transparent  
 Stock lengths: see internet  
 max. Production lengths: 50 m dep. on DN  
**Temperature Range**  
 -20 °C to +70 °C  
 peaks to +80 °C

# 3



## Microbe & Hydrolysis Resistant Hoses

# Extremely flexible hoses made from Polyester & Polyether-Polyurethane for a wide range of applications

### Master-PUR L Trivolution



PU Suction & Transport Hose, very lightweight, permanent antistatic, surface resistance <math>10^9</math> Ohm, microbe-resistant, hardly inflammable

#### Applications

- Highly flexible spiral hose for suction and transport of abrasive solids, liquids and gases, fine-grained particles, e.g. dust and powder
- Suction/extraction of paper and textile fibres
- Protective hose against mechanical wear
- Oil mist extraction/suction
- Hardly inflammable acc. to DIN 4102 B1

#### Available in:

DN 25 - DN 500  
 Colour: transparent  
 Stock lengths: see internet max. Production lengths: 25 m dep. on DN  
**Temperature Range**  
 -40 °C to +90 °C  
 peaks to +125 °C

### Master-PUR H Trivolution



PU Suction & Transport Hose, flexible, permanent antistatic, surface resistance <math>10^9</math> Ohm, microbe-resistant, hardly inflammable

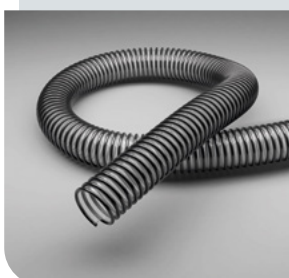
#### Applications

- Suction/transport of abrasive solids, paper fibres, granules, gases, liquids, rough-grained media with a high flow-rate, e.g. wood shavings
- Standard hose for industrial vacuum cleaners and granule conveyors
- Oil mist extraction/suction
- Hardly inflammable acc. to DIN 4102 B1

#### Available in:

DN 13 - DN 500  
 Colour: transparent  
 Stock lengths: see internet max. Production lengths: 25 m dep. on DN  
**Temperature Range**  
 -40 °C to +90 °C  
 peaks to +125 °C

### Master-PUR STEP MHR



PU Film Hose, crush-resistant, microbe & hydrolysis resistant, extremely flexible

#### Applications

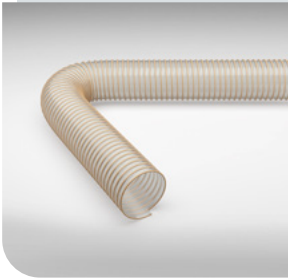
- Suction & transport hose for abrasive solids, for which microbe and hydrolysis resistance is required
- Light suction hose for municipal vehicles
- Leaf vacuums/blowers
- Lawnmowers

#### Available in:

DN 80 - DN 200  
 Colour: wall transparent with black spiral/helix  
 Stock lengths: see internet max. Production lengths: 25 m dep. on DN  
**Temperature Range**  
 -40 °C to +90 °C  
 peaks to +125 °C

# Microbe & Hydrolysis Resistant Hoses

## Master-PUR H-MHR



PU Suction & Transport Hose medium duty, flexible, microbe & hydrolysis resistant

### Applications

- Standard hose for industrial vacuum cleaners
- Granulate transport hose
- Transport of chips/shavings
- Suction and transport of paper fibres
- Oil mist extraction/suction
- Suction & transport hose for abrasive solids, for which microbe and hydrolysis resistance is required

### Order-specific production in:

DN 16 - DN 500  
 Colour: transparent  
 max. Production lengths: 25 m dep. on DN  
**Temperature Range**  
 -40 °C to +90 °C  
 peaks to +125 °C

## Master-PUR H Streetmaster Pro



PU Sweepers Suction Hose, medium weight, good flexibility, highly abrasion, vacuum, microbe and hydrolysis resistant, with external folding

### Applications

- Disposal and cleaning technology
- Suction hose on large and small sweepers machines
- Suction and transport hose for abrasive causing
- Solids with a microbial resistance and optimized flow values are required

### Available on request in:

DN 140 - DN 254  
 Colour: transparent, partial colouring  
 Stock lengths: see internet  
 max. Production lengths: 20 m dep. on DN  
**Temperature Range**  
 -40 °C to +90 °C  
 peaks to +125 °C

## Streetmaster GKS



PU Suction Hose for large street-cleaner vehicles, highly abrasion, vacuum & microbe-resistant

### Applications

- Municipal and waste disposal vehicles
- Suction dredger hose
- Suction hose for larger sweepers
- Suction & transport hose for abrasive solids, which require microbe resistance

### Available in:

DN 225, 250, 280  
 Colour: black  
 Stock lengths: see internet  
 max. Production lengths: 20 m dep. on DN  
**Temperature Range**  
 -40 °C to +90 °C  
 peaks to +125 °C

## Streetmaster KKS



PU Suction Hose for smaller street-cleaner vehicles, highly abrasion, vacuum & microbe-resistant

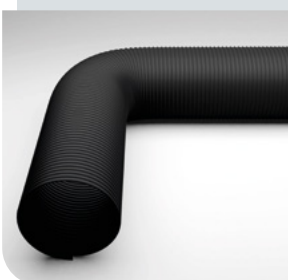
### Applications

- Municipal and waste disposal vehicles
- Suction dredger hose
- Suction hose for smaller sweepers
- Suction & transport hose for abrasive solids, which require microbe resistance

### Available in:

DN 200  
 Colour: black/transparent  
 Stock lengths: see internet  
 max. Production lengths: 20 m dep. on DN  
**Temperature Range**  
 -40 °C to +90 °C  
 peaks to +125 °C

## Streetmaster GLG



PU hose for larger leaf & grass suction devices, microbe-resistant

### Applications

- Transport hose for abrasive solids, which require microbe resistance
- Slope cutters
- Leaf vacuums/blowers

### Available in:

DN 400  
 Colour: black  
 Stock lengths: see internet  
 max. Production lengths: 20 m dep. on DN  
**Temperature Range**  
 -40 °C to +90 °C  
 peaks to +125 °C



## Food & Pharmaceutical Hoses

Smooth hoses made from Polyether-Polyurethane, certified to EU directives & FDA approved for almost any application in the Food & Pharmaceutical industries

### Master-PUR LF Food



PU Suction & Transport Hose, super lightweight, extremely flexible, Food-grade quality (FDA/ EU 10/2011)

#### Applications

Suction & transport hose for the

- Food industry
- Pharmaceuticals industry
- Chemicals industry

#### Available in:

DN 40 - DN 400  
Colour: transparent  
Stock lengths: see internet max. Production lengths: 25 m dep. on DN  
**Temperature Range**  
-40 °C to +90 °C  
peaks to +125 °C

### Master-PUR LF Food A



PU Suction & Transport Hose, super lightweight, extremely flexible, Food-grade quality (FDA/ EU 10/2011), permanent antistatic, surface resistance <math>< 10^9 \text{ Ohm}</math>

#### Applications

Suction & transport hose for the

- Food industry
- Pharmaceuticals industry
- Chemicals industry

#### Available in:

DN 40 - DN 400  
Colour: transparent  
Stock lengths: see internet max. Production lengths: 25 m dep. on DN  
**Temperature Range**  
-40 °C to +90 °C  
peaks to +125 °C

### Master-PUR L Food



PU Suction & Transport Hose, lightweight, highly flexible, Food-grade quality (FDA/ EU 10/2011)

#### Applications

Certified suction & transport hose for solids & liquids in the

- Food industry
- Pharmaceuticals industry
- Chemicals industry

#### Available in:

DN 32 - DN 203  
Colour: transparent  
Stock lengths: see internet max. Production lengths: 25 m dep. on DN  
**Temperature Range**  
-40 °C to +90 °C  
peaks to +125 °C

## Food & Pharmaceutical Hoses

### Master-PUR L Food A



PU Suction & Transport Hose, lightweight, highly flexible, food-grade quality acc. to EU 10/2011 and FDA, permanent antistatic, surface resistance  $< 10^9$  Ohm

#### Applications

Certified suction & transport hose for solids & liquids in the

- Food industry
- Pharmaceuticals industry
- Chemicals industry

#### Available in:

DN 32 - DN 203  
Colour: transparent  
Stock lengths: see internet max. Production lengths: 25 m dep. on DN  
**Temperature Range**  
-40 °C to +90 °C  
peaks to +125 °C

### Master-PUR H Food



PU Suction & Transport Hose, medium duty, very flexible, Food-grade quality (FDA/ EU 10/2011)

#### Applications

Certified suction & transport hose for solids & liquids in the

- Food industry
- Pharmaceuticals industry
- Chemicals industry

#### Available in:

DN 20 - DN 203  
Colour: transparent  
Stock lengths: see internet max. Production lengths: 25 m dep. on DN  
**Temperature Range**  
-40 °C to +90 °C  
peaks to +125 °C

### Master-PUR H Food A



PU Suction & Transport Hose, medium duty, very flexible, Food-grade quality (FDA/ EU 10/2011), permanent antistatic, surface resistance  $< 10^9$  Ohm

#### Applications

Certified suction & transport hose for solids & liquids in the

- Food industry
- Pharmaceuticals industry
- Chemicals industry

#### Available in:

DN 20 - DN 203  
Colour: transparent  
Stock lengths: see internet max. Production lengths: 25 m dep. on DN  
**Temperature Range**  
-40 °C to +90 °C  
peaks to +125 °C

### Master-PUR HX Food



PU Suction & Transport Hose, heavy duty, flexible, Food-grade quality (FDA/ EU 10/2011)

#### Applications

Certified suction & transport hose for solids & liquids in the

- Food industry
- Pharmaceuticals industry
- Chemicals industry

#### Available in:

DN 32 - DN 152  
Colour: transparent  
Stock lengths: see internet max. Production lengths: 20 m dep. on DN  
**Temperature Range**  
-40 °C to +90 °C  
peaks to +125 °C

### Master-PUR HX Food A



PU Suction & Transport Hose, heavy duty, flexible, Food-grade quality (FDA/ EU 10/2011), permanent antistatic, surface resistance  $< 10^9$  Ohm

#### Applications

Certified suction & transport hose for solids & liquids in the

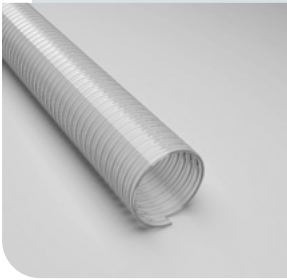
- Food industry
- Pharmaceuticals industry
- Chemicals industry

#### Available in:

DN 50 - DN 152  
Colour: transparent  
Production lengths: 10 m  
**Temperature Range**  
-40 °C to +90 °C  
peaks to +125 °C

## Food & Pharmaceutical Hoses

### Polderflex PUR Food



PU Suction & Transport Hose, extremely pressure/vacuum-proof, smooth inner & outer linings, Food-grade quality (FDA/ EU 10/2011)

#### Applications

Certified suction & transport hose for solids & liquids in the

- Food industry
- Pharmaceuticals industry
- Chemicals industry

#### Available in:

DN 32 - DN 152  
Colour: transparent  
Stock lengths: see internet  
max. Production lengths: 20 m

#### Temperature Range

-40 °C to +90 °C  
peaks to +125 °C

### Polderflex PUR Food A



PU Suction & Transport Hose, extremely pressure/vacuum-proof, smooth inner & outer linings, permanent antistatic, surface resistance <math>< 10^9</math> Ohm, Food-grade quality (FDA/ EU 10/2011)

#### Applications

Certified suction & transport hose for solids & liquids in the

- Food industry
- Pharmaceuticals industry
- Chemicals industry

#### Available in:

DN 32 - DN 152  
Colour: transparent  
Stock lengths: see internet  
max. Production lengths: 20 m dep. on DN

#### Temperature Range

-40 °C to +90 °C  
peaks to +125 °C

### Master-PUR Flat Food



Spiral-Free PU Transport Hose, medium duty, Food-grade quality (FDA/ EU 10/2011)

#### Applications

- Spiral-free transport hose for abrasive solids

- Application as compensator
- Solids transport for sieving machines
- Conductor hose on charging station

#### Available in:

DN 50 - DN 300  
Colour: transparent  
Stock lengths: see internet  
max. Production lengths: 5 m dep. on DN

#### Temperature Range

-40 °C to +90 °C  
peaks to +125 °C

### Master-SIL SD Food



Silicone Pressure Hose, Food-grade quality (FDA)

#### Applications

- When using the corresponding connectors, the hose can remain in the pipeline for cleaning purposes

- Suction and transport hose for powder and liquid media in the food industry
- Machine development for cosmetic products
- Pharmaceuticals industry
- Chemicals industry

#### Available in:

DN 10 - DN 102  
Colour: transparent  
Stock lengths: see internet  
max. Production lengths: 20 m dep. on DN

#### Temperature Range

-60 °C to +200 °C

## Food & Pharmaceutical Hoses

# 5



## Antistatic & Electroconductive Hoses

### For preventing danger of ignition through electrostatic charges

#### Master-PUR L Trivolution



PU Suction & Transport Hose, highly flexible, antistatic, surface resistance  $< 10^9$  Ohm, microbe-resistant, hardly inflammable

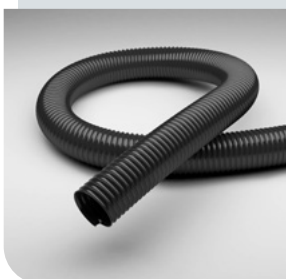
#### Applications

- Highly flexible spiral hose for suction and transport of abrasive solids, liquids and gases, fine-grained particles, e.g. dust and powder
- Suction/extraction of paper and textile fibres
- Protective hose against mechanical wear
- Oil mist extraction/suction
- Hardly inflammable acc. to DIN 4102 B1

#### Available in:

DN 25 - DN 500  
Colour: transparent  
Stock lengths: see internet max. Production lengths: 25 m dep. on DN  
**Temperature Range**  
-40 °C to +90 °C  
peaks to +125 °C

#### Master-PUR L EL



PU Suction & Transport Hose, light duty, highly flexible, electroconductive, surface resistance  $< 10^5$  Ohm

#### Applications

- Transport of fine-grained particles, such as dust and powder
- Suction/extraction of paper & textile fibres
- Suction & transport hose for abrasive solids, liquids and gases
- Oil mist extraction/suction
- Protective hose against mechanical wear
- Danger zones, which require electrically conductive hoses

#### Available in:

DN 25 - DN 500  
Colour: black  
Stock lengths: see internet max. Production lengths: 25 m dep. on DN  
**Temperature Range**  
-40 °C to +90 °C  
peaks to +125 °C

#### Master-PUR L MHR A



PU Suction & Transport Hose, light duty, highly flexible, microbe & hydrolysis-resistant, permanent antistatic, surface resistance  $< 10^9$  Ohm

#### Applications

- Transport of fine-grained particles, such as dust and powder
- Suction/extraction of paper & textile fibres
- Protective hose against mechanical wear
- Suction & transport hose for abrasive solids, for which microbe and hydrolysis resistance is required
- Oil mist extraction/suction

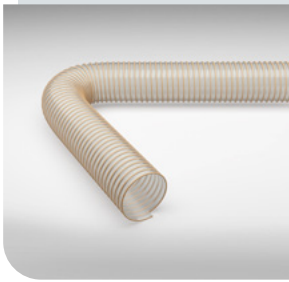
#### Available in:

DN 25 - DN 500  
Colour: transparent  
Stock lengths: see internet max. Production lengths: 25 m dep. on DN  
**Temperature Range**  
-40 °C to +90 °C  
peaks to +125 °C



# Antistatic & Electroconductive Hoses

## Master-PUR H Trivolution



PU Suction & Transport Hose, flexible, permanent antistatic, surface resistance  $< 10^9$  Ohm, microbe-resistant, hardly inflammable

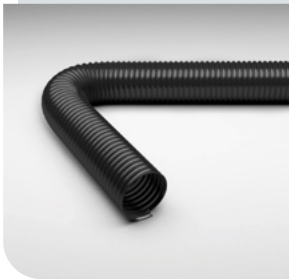
### Applications

- Suction/transport of abrasive solids, paper fibres, granules, gases, liquids, rough-grained media with a high flow-rate, e.g. wood shavings
- Standard hose for industrial vacuum cleaners and granule conveyors
- Oil mist extraction/suction
- Hardly inflammable acc. to DIN 4102 B1

### Available in:

DN 13 - DN 500  
Colour: transparent  
Stock lengths: see internet max. Production lengths: 25 m dep. on DN  
**Temperature Range**  
-40 °C to +90 °C  
peaks to +125 °C

## Master-PUR H EL



PU Suction & Transport Hose, medium duty, very flexible, electroconductive, surface resistance  $< 10^3$  Ohm

### Applications

- Transport of fine-grained particles, such as dust and powder
- Protective hose against mechanical wear
- Suction of coarse-grained media with high flow rate
- Oil mist extraction/suction
- Danger zones, which require electrically conductive hoses

### Available in:

DN 25 - DN 500  
Colour: black  
Stock lengths: see internet max. Production lengths: 25 m dep. on DN  
**Temperature Range**  
-40 °C to +90 °C  
peaks to +125 °C

## Master-PUR H MHR A



PU Suction & Transport Hose, medium duty, very flexible, microbe & hydrolysis-resistant, permanent antistatic, surface resistance  $< 10^9$  Ohm

### Applications

- Protective hose against mechanical wear
- Suction & transport hose for abrasive solids, for which microbe and hydrolysis resistance is required

### Available in:

DN 16 - DN 500  
Colour: transparent  
Stock lengths: see internet max. Production lengths: 25 m dep. on DN  
**Temperature Range**  
-40 °C to +90 °C  
peaks to +125 °C

## Master-PUR HX Trivolution



PU Suction & Transport Hose, abrasion/vacuum-resistant, reinforced, permanent antistatic,  $< 10^9$  Ohm, microbe-resistant, hardly inflammable

### Applications

- Suction & transport hose for silo vehicles, loading stations, flat-roof gravelling, extremely abrasive media, problematic transport goods such as sand, gravel, grain, etc.
- Excellent for greater durability and longer maintenance intervals
- Hardly inflammable acc. to DIN 4102 B1

### Available in:

DN 32 - DN 300  
Colour: transparent  
Stock lengths: see internet max. Production lengths: 20 m dep. on DN  
**Temperature Range**  
-40 °C to +90 °C  
peaks to +125 °C

## Master-PUR HX EL



PU Suction & Transport Hose, flexible, highly abrasion/vacuum-proof, electroconductive, surface resistance  $< 10^3$  Ohm

### Applications

- Danger zones, which require electrically conductive hoses
- Suction of coarse-grained media with high flow rate
- Protective hose against mechanical wear
- Suction & transport hose for abrasive solids, liquids and gases

### Available in:

DN 32 - DN 300  
Colour: black  
Stock lengths: see internet max. Production lengths: 20 m dep. on DN  
**Temperature Range**  
-40 °C to +90 °C  
peaks to +125 °C

# Antistatic & Electroconductive Hoses

## Master-PUR Performance



PU Suction & Transport Hose, extremely abrasion/vacuum-resistant, totally smooth inner lining, permanent antistatic, <math>< 10^9</math> Ohm, microbe-resistant

### Applications

- Transport hose for problematic media, e.g. sand, gravel, grain, granules, as well as for conveyance, handling and loading plants
- Everywhere where easy-to-clean surfaces are required
- Suction and transport hose for extremely abrasive solid, liquid and gaseous media
- Transports hose for glass works, steelworks, quarries, shipyards, docks, flat-roof gravelling, etc.

### Available in:

DN 38 - DN 200  
 Colour: transparent  
 Stock lengths: see internet max. Production lengths: 10 m dep. on DN  
**Temperature Range**  
 -40 °C to +90 °C  
 peaks to +125 °C

## Master-PE LF EL



PE Film Hose, super lightweight, highly flexible, electroconductive, surface resistance <math>\leq 10^4</math> Ohm

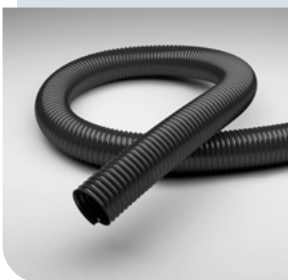
### Applications

- Suction/extraction of chemical fumes and gases in ventilation & air conditioning

### Available in:

DN 40 - DN 600  
 Colour: black  
 Stock lengths: see internet max. Production lengths: 25 m dep. on DN  
**Temperature Range**  
 -40 °C to +60 °C  
 peaks to +80 °C

## Master-PE L EL



PE Suction & Transport Hose, lightweight, highly flexible, electroconductive, surface resistance <math>\leq 10^4</math> Ohm

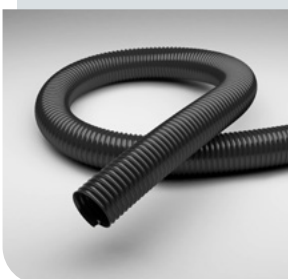
### Applications

- Suction & transport hose for aggressive gases and liquids
- Transport of fine-grained particles, such as dust and powder
- Oil mist extraction/suction
- Danger zones, which require electrically conductive hoses

### Available in:

DN 25 - DN 300  
 Colour: black  
 Stock lengths: see internet max. Production lengths: 25 m dep. on DN  
**Temperature Range**  
 -35 °C to +80 °C  
 peaks to +120 °C

## Master-PVC LF EL



PVC Film Hose, lightweight, highly flexible, electroconductive, surface resistance <math>< 10^6</math> Ohm

### Applications

- Chemicals industry
- Apparatus construction
- Suction & transport hose for solid, liquid and gaseous media
- Danger zones, which require electrically conductive hoses
- Transport of fine-grained particles, such as dust and powder

### Available in:

DN 50 - DN 300  
 Colour: black  
 Stock lengths: see internet max. Production lengths: 25 m dep. on DN  
**Temperature Range**  
 -20 °C to +70 °C  
 peaks to +80 °C

## Master-Clip VINYL EL



Suction & Blower Hose made from PVC-coated polyester fabric, antistatic, surface resistance <math>< 10^6</math> Ohm

### Applications

- Danger zones, which requires electro-conductivity acc. to TRBS
- Suction & conveyance of aggressive media, explosive gases & fumes
- Air supply & extraction in explosion-protected areas
- For greater mechanical demands
- Low pressure range
- Extractor units

### Order-specific production in:

DN 50 - DN 900  
 Colour: black  
 Stock lengths: see internet max. Production lengths: 25 m dep. on DN  
**Temperature Range**  
 -20 °C to +70 °C  
 peaks to +80 °C

# Antistatic & Electroconductive Hoses

## Master-Clip VITON® EL



Suction & Blower hose made from VITON®-coated Polyester fabric, for corrosive media up to +210 °C, electroconductive, surface resistance  $\leq 10^4$  Ohm

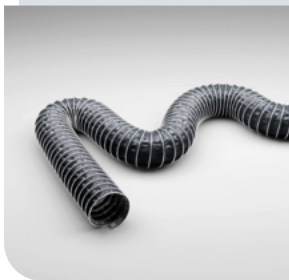
### Applications

- Danger zones, which requires electro-conductivity acc. to TRBS
- Paint mist extraction
- Suction/extraction of aggressive media in medium Temperature Range
- Low pressure range
- Chemicals industry

### Order-specific production in:

DN 38 - DN 900  
 Colour: black  
 Stock lengths: see internet max. Production lengths: 25 m dep. on DN  
**Temperature Range**  
 -25 °C to +210 °C  
 peaks to +240 °C

## Master-Clip PTFE EL



Suction & Blower Hose for corrosive media up to +280 °C, electroconductive, surface resistance  $< 10^6$  Ohm

### Applications

- Danger zones, which requires electro-conductivity acc. to TRBS
- Suction & conveyance of aggressive media, explosive gases & fumes
- Paint mist extraction
- Paint, wood and paper industry
- Solvent extraction
- Pharmaceuticals industry
- Low pressure range
- Chemicals industry

### Order-specific production in:

DN 55 - DN 900  
 Colour: black  
 Stock lengths: see internet max. Production lengths: 10 m dep. on DN  
**Temperature Range**  
 -150 °C to +280 °C  
 peaks to +300 °C

## Master-Clip PTFE H EL



Suction & Blower Hose for corrosive media up to +175 °C, electroconductive, surface resistance  $< 10^6$  Ohm

### Applications

- Danger zones, which requires electro-conductivity acc. to TRBS
- Suction & conveyance of aggressive media, explosive gases & fumes
- Paint mist extraction
- Paint, wood and paper industry
- Solvent extraction
- Pharmaceuticals industry
- Low pressure range
- Chemicals industry

### Order-specific production in:

DN 38 - DN 900  
 Colour: black  
 Stock lengths: see internet max. Production lengths: 25 m dep. on DN  
**Temperature Range**  
 -40 °C to +175 °C  
 peaks to +190 °C

## Master-Clip PTFE S EL



Suction & Blower Hose for corrosive media up to +250 °C, electroconductive, surface resistance  $< 10^6$  Ohm

### Applications

- Danger zones, which requires electro-conductivity acc. to TRBS
- Suction & conveyance of aggressive media, explosive gases & fumes
- Paint mist extraction
- Paint, wood and paper industry
- Solvent extraction
- Pharmaceuticals industry
- Low pressure range
- Chemicals industry

### Order-specific production in:

DN 50 - DN 900  
 Colour: black  
 Stock lengths: see internet max. Production lengths: 10 m dep. on DN  
**Temperature Range**  
 -70 °C to +250 °C  
 peaks to +270 °C

## Master-VAC EL



PE-EVA Suction & Transport Hose, lightweight, crush-resistant, electroconductive, surface resistance  $< 10^6$  Ohm

### Applications

- Suction hose for fine-grained particles, e.g. dust, powders, fibres
- Protective hose
- Swimming pool cleaning
- Chemicals industry, ventilation
- Conveyance & suction of solid, liquid & gaseous media
- Dust removal units
- Household & industrial vacuum cleaners
- Handheld machines

### Available in:

DN 25 - DN 50  
 Colour: black  
 Stock lengths: see internet max. Production lengths: 20 m dep. on DN  
**Temperature Range**  
 -40 °C to +60 °C  
 peaks to +70 °C

# 6



Air-Conditioning, Ventilation  
& Welding Fumes Hoses

## Air Supply & Ventilation in Air-Conditioning Technology & Extractor Units

### Master-Clip VINYL



Suction & Blower  
Hose made from  
PVC foil/film

#### Applications

- Air-conditioning & ventilation systems
- Air supply & extraction
- Low pressure range
- Extractor units

#### Order-specific production in:

DN 40 - DN 900  
Colour: grey  
Stock lengths: see internet  
max. Production lengths:  
25 m dep. on DN

#### Temperature Range

-20 °C to +70 °C  
peaks to +80 °C

### Master-Clip VINYL B



Suction & Blower  
Hose made from  
PVC-coated  
Polyester fabric,  
hardly inflammable

#### Applications

- Air-conditioning & ventilation systems
- Air supply & extraction
- Tent ventilation
- Solder fume extraction
- Low pressure range
- Extractor units

#### Order-specific production in:

DN 40 - DN 900  
Colour: grey  
Stock lengths: see internet  
max. Production lengths:  
25 m dep. on DN

#### Temperature Range

-20 °C to +70 °C  
peaks to +80 °C

### Master-Clip PE



Suction & Blower  
Hose made from  
PE-coated PE fabric,  
environmentally friendly

#### Applications

- Air-conditioning & ventilation systems
- Air supply & extraction
- Vacuum devices for asbestos removal
- Low pressure range
- Extractor units

#### Order-specific production in:

DN 40 - DN 900  
Colour: white  
Stock lengths: see internet  
max. Production lengths:  
25 m dep. on DN

#### Temperature Range

-40 °C to +85 °C  
peaks to +95 °C

# Air-Conditioning, Ventilation & Welding Fumes Hoses

## Master-Clip PUR



Suction & Blower  
Hose made from  
PU film/foil, extremely  
abrasion-proof

### Applications

- Suction/extraction of abrasive solids
- Air-conditioning & ventilation systems
- Low pressure range

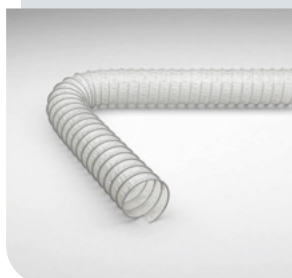
### Order-specific production in:

DN 40 - DN 900  
Colour: transparent  
Stock lengths: see internet  
max. Production lengths:  
15 m dep. on DN

### Temperature Range

-40 °C to +90 °C  
peaks to +125 °C

## Master-Clip PUR S



Suction & Blower  
Hose made from  
PU film/foil, extremely  
abrasion-proof,  
double-layered

### Applications

- Suction/extraction of abrasive solids
- Filling plants
- Low pressure range

### Order-specific production in:

DN 50 - DN 900  
Colour: transparent  
Stock lengths: see internet  
max. Production lengths:  
15 m dep. on DN

### Temperature Range

-40 °C to +90 °C  
peaks to +125 °C

## Master-Clip SPARK



Special hose for welding  
fumes extraction, made  
from PVC-coated glass  
fabric

### Applications

- Welding fume extraction
- For greater safety requirements
- Air-conditioning & ventilation systems
- Air supply and extraction
- Tent heating
- Solder fume extraction
- Low pressure range
- Extractor units

### Order-specific production in:

DN 40 - DN 900  
Colour: dary fgrey  
Stock lengths: see internet  
max. Production lengths:  
15 m dep. on DN

### Temperature Range

-20 °C to +90 °C  
peaks to +110 °C

## Master-Clip SPARK XL



Special hose for  
welding fume extraction  
with increased risk of  
flying sparks

### Applications

- For greater safety requirements
- Grinding dust extraction with high degree  
of flying sparks
- Welding fume extraction with greater degree  
of flying sparks
- Suction/extraction of hot and abrasive  
sanding dust

### Order-specific production in:

DN 50 - DN 900  
Colour: black  
Stock lengths: see internet  
max. Production lengths:  
15 m dep. on DN

### Temperature Range

-40 °C to +200 °C  
peaks to +280 °C

## Master-VENT 2



Suction & Blower  
Hose made from  
co-polymer coated  
Polyester fabric

### Applications

- Steam extraction
- Air-conditioning & ventilation systems
- Extractor units, which require normal  
inflammable hoses
- Extractor fans & extractors

### Available in:

DN 51 - DN 610  
Colour: grey  
Stock lengths: see internet  
max. Production lengths:  
10 m dep. on DN

### Temperature Range

-30 °C to +140 °C

# 7



## Exhaust Gas Hoses

# Hoses for suction/extraction of exhaust fumes from combustion engines at temperatures up to +1100 °C

### Carflex Super



Exhaust hose for exhaust fumes/gases up to +200 °C, super lightweight, crush-resistant

#### Applications

- Suction/extraction of engine exhaust fumes up to max. +200 °C
- Permanently rollover-proof exhaust hose
- Medium wear during extraction of petrol & diesel engine exhaust fumes
- All conventional exhaust systems, such as:
  - Exhaust Hose Reel
  - Suction Rail System
  - Upper/Lower Floor Systems
  - Stationary Systems

#### Available in:

DN 25 - DN 200  
 Colour: black  
 Stock lengths: see internet  
 max. Production lengths: 25 m dep. on DN  
**Temperature Range**  
 to +200 °C with appropriate use of exhaust regulators and sufficient air supply (approx. 50%)

### Carflex 200



Exhaust gas hose for exhaust fumes/gases up to +200 °C

#### Applications

- Suction/extraction of engine exhaust fumes up to max. +200 °C
- All conventional exhaust systems, such as:
  - Exhaust Hose Reel
  - Suction Rail System
  - Upper/Lower Floor Systems
  - Stationary Systems
- Light to medium wear during extraction of petrol & diesel engine exhaust fumes

#### Order-specific production in:

DN 63 - DN 200  
 Colour: wall black, spiral/helix blue  
 Stock lengths: see internet  
 max. Production lengths: 25 m dep. on DN  
**Temperature Range**  
 to +200 °C with appropriate use of exhaust regulators and sufficient air supply (approx. 50%)

### Carflex 300



Exhaust gas hose for exhaust fumes/gases up to +300 °C

#### Applications

- All conventional exhaust systems, such as:
  - Exhaust Hose Reel
  - Suction Rail System
  - Upper/Lower Floor Systems
  - Stationary Systems
- Medium to high wear during extraction of petrol and diesel engine exhaust fumes, esp. heavy-duty & construction vehicles
- Suction/extraction of engine exhaust fumes up to max. +300 °C

#### Order-specific production in:

DN 63 - DN 200  
 Colour: inner lining silver-grey, wall green-grey, spiral/helix red  
 Stock lengths: see internet  
 max. Production lengths: 25 m dep. on DN  
**Temperature Range**  
 to +300 °C with appropriate use of exhaust regulators and sufficient air supply (approx. 50%)

# Exhaust Gas Hoses

## Master-Clip HT 300



Medium & high temperature hose up to +300 °C, silicone-free, highly flexible

- + silicone-free
- + highly flexible
- + super lightweight

### Applications

- Machine manufacturing
- Automotive manufacturing
- Low pressure range
- Extractor units
- Exhaust extraction (engine manufacturing)
- Hot air
- Smoke extractors
- Defence systems
- Aircraft manufacturing

### Order-specific production in:

DN 50 - DN 900  
Colour: grey  
Stock lengths: see internet max. Production lengths: 15 m dep. on DN

### Temperature Range

-20 °C to +300 °C  
peaks to +350 °C

## Master-Clip CAR



Medium & high temperature hose up to +300 °C

### Applications

- Machine manufacturing
- Automotive manufacturing
- Low pressure range
- Extractor units
- Exhaust extraction (engine manufacturing)
- Hot air
- Smoke extractors
- Defence systems
- Aircraft manufacturing

### Order-specific production in:

DN 38 - DN 900  
Colour: inner lining silver-grey, outer lining green-grey  
Stock lengths: see internet max. Production lengths: 20 m dep. on DN

### Temperature Range

-60 °C to +300 °C  
peaks to +350 °C

## Master-Clip ISO-CAR



Medium & high temperature hose up to +300 °C, double-layered

### Applications

- Diesel engine test-benches with higher extraction performance
- Machine manufacturing
- Automotive manufacturing
- Low pressure range
- Extractor units
- Hot air
- Smoke extractors
- Defence systems
- Aircraft manufacturing

### Order-specific production in:

DN 38 - DN 900  
Colour: inner lining silver-grey, outer lining green-grey  
Stock lengths: see internet max. Production lengths: 20 m dep. on DN

### Temperature Range

-60 °C to +300 °C  
peaks to +350 °C

## Master-Clip KAPTON®



Medium & high temperature hose up to +400 °C, excellent chemical resistance

### Applications

- Suction of aggressive gases at high temperatures
- Exhaust gas routing in gauge pressure & low pressure ranges
- Vehicle & engine manufacturing
- Exhaust gas extraction for high-performance engine test-benches in the Automotive industry

### Order-specific production in:

DN 50 - DN 900  
Colour: outer lining white, inner lining yellow/gold  
Stock lengths: see internet max. Production lengths: 15 m dep. on DN

### Temperature Range

-260 °C to +400 °C

## Master-Clip HT 450



Exhaust gas hose for exhaust fumes/gases up to +450 °C, double-layered

### Applications

- Diesel engine test-benches with higher extraction performance
- Machine manufacturing
- Automotive manufacturing
- Low pressure range
- Extractor units
- Hot air
- Smoke extractors
- Defence systems
- Aircraft manufacturing

### Order-specific production in:

DN 50 - DN 900  
Colour: silver-grey  
Stock lengths: see internet max. Production lengths: 15 m dep. on DN

### Temperature Range

-20 °C to +450 °C  
peaks to +500 °C

# Exhaust Gas Hoses

## Master-Clip HT 650



Exhaust gas hose for exhaust fumes/gases up to +650 °C

### Applications

- Infrared drying units
- Oven manufacturing
- Exhaust gas extraction for high-performance engine test-benches in the Automotive industry
- Automotive & aircraft industry
- Shipbuilding industry
- Heat protection
- Smoke extraction
- Mining & steel industry
- Machine manufacturing

### Order-specific production in:

DN 50 - DN 900  
Colour: silver-grey  
Stock lengths: see internet  
max. Production lengths:  
15 m dep. on DN

### Temperature Range

-20 °C to +650 °C  
peaks to +750 °C

## Master-Clip HT 1100



Exhaust gas hose for exhaust fumes/gases up to +1100 °C

### Applications

- Oven manufacturing & heat protection
- Automotive, aircraft & shipbuilding industries
- Defence systems
- Mining & steel industry
- Exhaust gas extraction for high-performance engine test-benches in the Automotive industry
- Suction of turbojet engine exhaust fumes
- Exhaust gas extraction for larger engines
- Extreme temperature demands
- Suction/extraction during spark formation

### Order-specific production in:

DN 75 - DN 900  
Colour: silver-grey  
Stock lengths: see internet  
max. Production lengths:  
15 m dep. on DN

### Temperature Range

-20 °C to +1100 °C





Temperature-Resistant  
Hoses up to +1.100 °C

## Suction & transport hoses for media temperatures up to +1.100 °C

### Master-Clip NEOPRENE



Medium & high  
temperature hose  
up to +125 °C

#### Applications

- Air-conditioning & ventilation systems
- Engine manufacturing
- Exhaust gas extraction
- Suction/extraction of aggressive media
- Transport of hot & cold air
- Automotive manufacturing
- Low pressure range
- Chemicals industry

#### Order-specific production in:

DN 38 - DN 900

Colour: black

Stock lengths: see internet

max. Production lengths:

25 m dep. on DN

#### Temperature Range

-35 °C to +125 °C

peaks to +150 °C

### Master-SANTO SL



TPV Suction &  
Transport Hose,  
very lightweight, for  
increased temperatures

#### Applications

- Steam extraction
- Air supply & extraction in engine applications
- Conveyance of hot & cold air in Automotive & machine manufacturing
- Gaseous media

#### Available in:

DN 25 - DN 400

Colour: fabric black,

spiral/helix grey

Stock lengths: see internet

max. Production lengths:

25 m dep. on DN

#### Temperature Range

-40 °C to +130 °C

peaks to +150 °C

### Master-SANTO L



TPV Suction &  
Transport Hose,  
lightweight, for  
increased temperatures

#### Applications

- Protective hose against mechanical wear
- Steam extraction
- Air supply & extraction in engine applications
- Conveyance of hot & cold air in Automotive & machine manufacturing
- Liquid & gaseous media

#### Available in:

DN 25 - DN 500

Colour: black

Stock lengths: see internet

max. Production lengths:

25 m dep. on DN

#### Temperature Range

-40 °C to +130 °C

peaks to +150 °C

# Temperature-Resistant Hoses up to +1.100 °C

## Master-SANTO H



TPV Suction & Transport Hose, medium duty, for increased temperatures

### Applications

- Protective hose against mechanical wear
- Steam extraction
- Air supply & extraction in engine applications
- Conveyance of hot & cold air in Automotive & machine manufacturing
- Liquid & gaseous media

### Available in:

DN 25 - DN 500  
 Colour: black  
 Stock lengths: see internet max. Production lengths: 25 m dep. on DN  
**Temperature Range**  
 -40 °C to +125 °C  
 peaks to +150 °C

## Master-NEO 1



Medium & high temperature hose up to + 135 °C

### Applications

- Chemicals industry
- Hot air hose for granulate dryer
- Machine & engine manufacturing
- Shipbuilding
- Plastic processing industry
- Waste incineration plants
- Conveyance of air & gaseous media with high nominal and ambient temperatures
- Automotive & aircraft manufacturing

### Available in:

DN 13 - DN 305  
 Colour: black  
 Stock lengths: see internet max. Production lengths: 4 m dep. on DN  
**Temperature Range**  
 -35 °C to +135 °C  
 peaks -55 °C to +150 °C

## Master-NEO 2



Medium & high temperature hose up to + 135 °C, double-layered

### Applications

- Chemicals industry
- Conveyance of air & gaseous media with high nominal and ambient temperatures
- Hot air hose for granulate dryer
- Machine & engine manufacturing
- Shipbuilding
- Plastic processing industry
- Waste incineration plants
- Automotive & aircraft manufacturing

### Available in:

DN 13 - DN 305  
 Colour: black  
 Stock lengths: see internet max. Production lengths: 4 m dep. on DN  
**Temperature Range**  
 -35 °C to +135 °C  
 peaks -55 °C to +150 °C

## Master-Clip HYPALON®



Medium & high temperature hose up to +175 °C

### Applications

- Air-conditioning & ventilation systems
- Engine manufacturing
- Exhaust gas extraction
- Suction/extraction of aggressive media
- Transport of hot & cold air
- Granulate drying
- Standard industrial hose
- Automotive manufacturing
- Low pressure range
- Extractor units

### Order-specific production in:

DN 38 - DN 900  
 Colour: outer lining black, inner lining green  
 Stock lengths: see internet max. Production lengths: 25 m dep. on DN  
**Temperature Range**  
 -40 °C to +175 °C  
 peaks to +190 °C

## Master-Clip VITON®



Medium & high temperature hose up to +210 °C

### Applications

- Paint mist extraction
- Suction/extraction of aggressive media in medium Temperature Range
- Low pressure range
- Chemicals industry

### Order-specific production in:

DN 38 - DN 900  
 Colour: outer lining red, inner lining black  
 Stock lengths: see internet max. Production lengths: 25 m dep. on DN  
**Temperature Range**  
 -25 °C to +210 °C  
 peaks to +240 °C

# Temperature-Resistant Hoses up to +1.100 °C

## Master-SIL 1



Medium & high temperature hose up to +250 °C, double-layered

### Applications

- Chemicals industry
- Hot air hose for granulate dryer
- Machine & engine manufacturing
- Shipbuilding
- Plastic processing industry
- Waste incineration plants
- Conveyance of air & gaseous media with high nominal and ambient temperatures
- Automotive & aircraft manufacturing

### Available in:

DN 13 - DN 305  
 Colour: red  
 Stock lengths: see internet max. Production lengths: 4 m dep. on DN  
**Temperature Range**  
 -70 °C to +250 °C  
 peaks -85 °C to +300 °C

## Master-SIL 2



Medium & high temperature hose up to +250 °C, double-layered

### Applications

- Chemicals industry
- Conveyance of air & gaseous media with high nominal and ambient temperatures
- Hot air hose for granulate dryer
- Machine & engine manufacturing
- Shipbuilding
- Plastic processing industry
- Waste incineration plants
- Automotive & aircraft manufacturing

### Available in:

DN 13 - DN 305  
 Colour: red  
 Stock lengths: see internet max. Production lengths: 4 m dep. on DN  
**Temperature Range**  
 -70 °C to +250 °C  
 peaks -85 °C to +300 °C

## Master-Clip SILICON



Medium & high temperature hose up to +300 °C

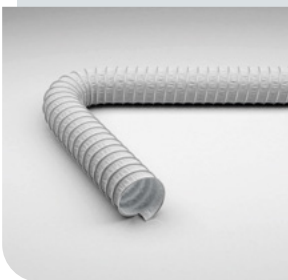
### Applications

- Engine manufacturing
- Hot & cold air conveyance
- Machine manufacturing
- Automotive manufacturing
- Low pressure range
- Extractor units
- Defence systems
- Aircraft manufacturing

### Order-specific production in:

DN 40 - DN 900  
 Colour: grey  
 Stock lengths: see internet max. Production lengths: 15 m dep. on DN  
**Temperature Range**  
 -60 °C to +300 °C  
 peaks to +350 °C

## Master-Clip ISO-SILICON



Medium & high temperature hose up to +300 °C, double-layered

### Applications

- Engine manufacturing
- Hot & cold air conveyance
- Extractor units with greater suction performance
- Automotive manufacturing
- Low pressure range
- Defence systems
- Aircraft manufacturing

### Order-specific production in:

DN 40 - DN 900  
 Colour: grey  
 Stock lengths: see internet max. Production lengths: 15 m dep. on DN  
**Temperature Range**  
 -60 °C to +300 °C  
 peaks to +350 °C

## Master-Clip HT 300



Medium & high temperature hose up to +300 °C, silicone-free, highly flexible

### Applications

- Machine manufacturing
- Automotive manufacturing
- Low pressure range
- Extractor units
- Exhaust extraction (engine manufacturing)
- Hot air
- Smoke extractors
- Defence systems
- Aircraft manufacturing

### Order-specific production in:

DN 50 - DN 900  
 Colour: grey  
 Stock lengths: see internet max. Production lengths: 15 m dep. on DN  
**Temperature Range**  
 -20 °C to +300 °C  
 peaks to +350 °C

+ silicone-free  
 + highly flexible  
 + super lightweight

# Temperature-Resistant Hoses up to +1.100 °C

## Master-Clip CAR



Medium & high temperature hose up to +300 °C

### Applications

- Machine manufacturing
- Automotive manufacturing
- Low pressure range
- Extractor units
- Exhaust extraction (engine manufacturing)
- Hot air
- Smoke extractors
- Defence systems
- Aircraft manufacturing

### Order-specific production in:

DN 38 - DN 900  
Colour: inner lining silver-grey, outer lining green-grey  
Stock lengths: see internet max. Production lengths:

20 m dep. on DN

### Temperature Range

-60 °C to +300 °C  
peaks to +350 °C

## Master-Clip ISO-CAR



Medium & high temperature hose up to +300 °C, double-layered

### Applications

- Diesel engine test-benches with higher extraction performance
- Machine manufacturing
- Automotive manufacturing
- Low pressure range
- Extractor units
- Hot air
- Smoke extractors
- Defence systems
- Aircraft manufacturing

### Order-specific production in:

DN 38 - DN 900  
Colour: inner lining silver-grey, outer lining green-grey  
Stock lengths: see internet max. Production lengths:

20 m dep. on DN

### Temperature Range

-60 °C to +300 °C  
peaks to +350 °C

## Master-Clip HT 400



Medium & high temperature hose up to +400 °C

### Applications

- Oven manufacturing
- Heat protection
- Mining & steel industry
- Primarily suitable as suction/extractor hose
- Limited suitability for exhaust gas extraction
- Machine manufacturing
- Low pressure range
- Extractor units
- Hot air
- Smoke extractors

### Order-specific production in:

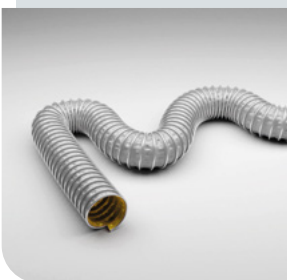
DN 38 - DN 900  
Colour: silver-grey  
Stock lengths: see internet max. Production lengths:

20 m dep. on DN

### Temperature Range

-20 °C to +400 °C  
peaks to +450 °C

## Master-Clip KAPTON®



Medium & high temperature hose up to +400 °C, excellent chemical resistance

### Applications

- Suction of aggressive gases at high temperatures
- Exhaust gas routing in gauge pressure & low pressure ranges
- Vehicle & engine manufacturing
- Exhaust gas extraction for high-performance engine test-benches in the Automotive industry

### Order-specific production in:

DN 50 - DN 900  
Colour: outer lining white, inner lining yellow/gold  
Stock lengths: see internet max. Production lengths:

15 m dep. on DN

### Temperature Range

-260 °C to +400 °C

## Master-Clip HT 450



Exhaust gas hose for exhaust fumes/gases up to +450 °C, double-layered

### Applications

- Diesel engine test-benches with higher extraction performance
- Machine manufacturing
- Automotive manufacturing
- Low pressure range
- Extractor units
- Hot air
- Smoke extractors
- Defence systems
- Aircraft manufacturing

### Order-specific production in:

DN 50 - DN 900  
Colour: silver-grey  
Stock lengths: see internet max. Production lengths:

15 m dep. on DN

### Temperature Range

-20 °C to +450 °C  
peaks to +500 °C

# Temperature-Resistant Hoses up to +1.100 °C

## Master-Clip HT 500



Medium & high temperature hose up to +500 °C

### Applications

- Exhaust gas routing in gauge pressure & low pressure range
- Vehicle & engine manufacturing
- Exhaust gas extraction in Automotive industry with higher temperature demands

### Order-specific production in:

DN 75 - DN 900  
Colour: inner lining silver, outer lining red  
Stock lengths: see internet max. Production lengths: 10 m dep. on DN  
**Temperature Range**  
-20 °C to +500 °C  
Temporary up to +550 °C

## Master-Clip HTP 500



Medium & high temperature hose up to +500 °C

### Applications

- Exhaust gas routing in gauge pressure range for combustion engines of all types
- Engine test-benches
- Generators
- Compressors
- Manipulators

### Order-specific production in:

DN 80 - DN 300  
Colour: inner lining white, outer lining black  
Stock lengths: see internet max. Production lengths: 3 m dep. on DN  
**Temperature Range**  
-20 °C to +500 °C

## Master-Clip HT 650



Exhaust gas hose for exhaust fumes/gases up to +650 °C

### Applications

- Infrared drying units
- Oven manufacturing
- Exhaust gas extraction for high-performance engine test-benches in the Automotive industry
- Automotive & aircraft industry
- Shipbuilding industry
- Heat protection
- Smoke extraction
- Mining & steel industry
- Machine manufacturing

### Order-specific production in:

DN 50 - DN 900  
Colour: silver-grey  
Stock lengths: see internet max. Production lengths: 15 m dep. on DN  
**Temperature Range**  
-20 °C to +650 °C  
peaks to +750 °C

## Master-Clip HT 1100



Exhaust gas hose for exhaust fumes/gases up to +1100 °C

### Applications

- Oven manufacturing & heat protection
- Automotive, aircraft & shipbuilding industries
- Defence systems
- Mining & steel industry
- Exhaust gas extraction for high-performance engine test-benches in the Automotive industry
- Suction of turbojet engine exhaust fumes
- Exhaust gas extraction for larger engines
- Extreme temperature demands
- Suction/extraction during spark formation

### Order-specific production in:

DN 75 - DN 900  
Colour: silver-grey  
Stock lengths: see internet max. Production lengths: 15 m dep. on DN  
**Temperature Range**  
-20 °C to +1100 °C



## Chemical-Resistant Hoses

# Suction & transport hoses for aggressive gases & fine-particled media such as dusts and powders in the chemicals industry

### Master-PE LF EL



PE Film Hose, super lightweight, highly flexible, electroconductive, surface resistance  $\leq 10^4$  Ohm

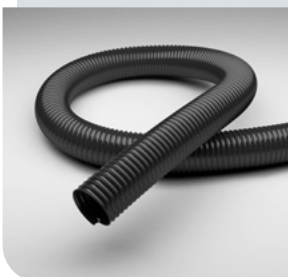
#### Applications

- Suction/extraction of chemical fumes and gases in ventilation & air conditioning

#### Available in:

DN 40 - DN 600  
Colour: black  
Stock lengths: see internet  
max. Production lengths:  
25 m dep. on DN  
**Temperature Range**  
-40 °C to +60 °C  
peaks to +80 °C

### Master-PE L EL



PE Suction & Transport Hose, lightweight, highly flexible, electroconductive, surface resistance  $\leq 10^4$  Ohm

#### Applications

- Suction & transport hose for aggressive gases and liquids
- Transport of fine-grained particles, such as dust and powder
- Oil mist extraction/suction
- Danger zones, which require electrically conductive hoses

#### Available in:

DN 25 - DN 300  
Colour: black  
Stock lengths: see internet  
max. Production lengths:  
25 m dep. on DN  
**Temperature Range**  
-35 °C to +80 °C  
peaks to +120 °C

### Master-Clip VINYL EL



Suction & Blower Hose made from PVC-coated polyester fabric, antistatic, surface resistance  $< 10^6$  Ohm

#### Applications

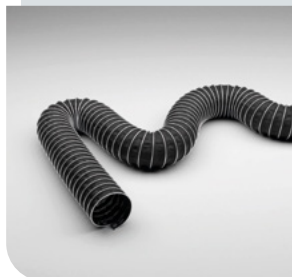
- Danger zones, which requires electro-conductivity acc. to TRBS
- Suction & conveyance of aggressive media, explosive gases & fumes
- Air supply & extraction in explosion-protected areas
- For greater mechanical demands
- Low pressure range
- Extractor units

#### Order-specific production in:

DN 50 - DN 900  
Colour: black  
Stock lengths: see internet  
max. Production lengths:  
20 m dep. on DN  
**Temperature Range**  
-20 °C to +70 °C  
peaks to +80 °C

## Chemical-Resistant Hoses

### Master-Clip NEOPRENE



Medium & high temperature hose up to +125 °C

#### Applications

- Air-conditioning & ventilation systems
- Engine manufacturing
- Exhaust gas extraction
- Suction/extraction of aggressive media
- Transport of hot & cold air
- Automotive manufacturing
- Low pressure range
- Chemicals industry

#### Order-specific production in:

DN 38 - DN 900

Colour: black

Stock lengths: see internet max. Production lengths:

25 m dep. on DN

#### Temperature Range

-35 °C to +125 °C

peaks to +150 °C

### Master-Clip HYPALON®



Medium & high temperature hose up to +175 °C

#### Applications

- Air-conditioning & ventilation systems
- Engine manufacturing
- Exhaust gas extraction
- Suction/extraction of aggressive media
- Transport of hot & cold air
- Granulate drying
- Standard industrial hose
- Automotive manufacturing
- Low pressure range
- Extractor units

#### Order-specific production in:

DN 38 - DN 900

Colour: outer lining black, inner lining green

Stock lengths: see internet max. Production lengths:

25 m dep. on DN

#### Temperature Range

-40 °C to +175 °C

peaks to +190 °C

### Master-Clip VITON®



Medium & high temperature hose up to +210 °C

#### Applications

- Paint mist extraction
- Suction/extraction of aggressive media in medium Temperature Range
- Low pressure range
- Chemicals industry

#### Order-specific production in:

DN 38 - DN 900

Colour: outer lining red, inner lining black

Stock lengths: see internet max. Production lengths:

25 m dep. on DN

#### Temperature Range

-25 °C to +210 °C

peaks to +240 °C

### Master-Clip VITON® EL



Suction & Blower hose made from VITON®-coated Polyester fabric, for corrosive media up to +210 °C, electroconductive, surface resistance  $\leq 10^4$  Ohm

#### Applications

- Danger zones, which requires electro-conductivity acc. to TRBS
- Paint mist extraction
- Suction/extraction of aggressive media in medium Temperature Range
- Low pressure range
- Chemicals industry

#### Order-specific production in:

DN 38 - DN 900

Colour: black

Stock lengths: see internet max. Production lengths:

25 m dep. on DN

#### Temperature Range

-25 °C to +210 °C

peaks to +240 °C

### Master-Clip PTFE



Suction & Blower Hose for aggressive media up to +250 °C

#### Applications

- Paint mist extraction
- Paint, wood and paper industry
- Solvent extraction
- Suction/extraction of aggressive media
- Pharmaceuticals industry
- Chemicals industry
- Low pressure range

#### Order-specific production in:

DN 40 - DN 900

Stock lengths: see internet max. Production lengths:

20 m dep. on DN

#### Temperature Range

-150 °C to +250 °C

peaks to +270 °C

## Chemical-Resistant Hoses

### Master-Clip PTFE EL



Suction & Blower Hose for corrosive media up to +280 °C, electroconductive, surface resistance <math>< 10^6 \text{ Ohm}</math>

#### Applications

- Danger zones, which requires electro-conductivity acc. to TRBS
- Suction & conveyance of aggressive media, explosive gases & fumes
- Paint mist extraction
- Paint, wood and paper industry
- Solvent extraction
- Pharmaceuticals industry
- Low pressure range
- Chemicals industry

#### Order-specific production in:

DN 55 - DN 900  
Colour: black  
Stock lengths: see internet  
max. Production lengths:

10 m dep. on DN

#### Temperature Range

-150 °C to +280 °C  
peaks to +300 °C

### Master-Clip PTFE H



Suction & Blower Hose for aggressive media up to +175 °C

#### Applications

- Suction & conveyance of aggressive media, explosive gases & fumes
- Paint mist extraction
- Paint, wood and paper industry
- Solvent extraction
- Pharmaceuticals industry
- Low pressure range
- Chemicals industry

#### Order-specific production in:

DN 38 - DN 900  
Colour: inner lining white, outer lining black  
Stock lengths: see internet  
max. Production lengths:

25 m dep. on DN

#### Temperature Range

-40 °C to +175 °C  
peaks to +190 °C

### Master-Clip PTFE H EL



Suction & Blower Hose for corrosive media up to +175 °C, electroconductive, surface resistance <math>< 10^6 \text{ Ohm}</math>

#### Applications

- Danger zones, which requires electro-conductivity acc. to TRBS
- Suction & conveyance of aggressive media, explosive gases & fumes
- Paint mist extraction
- Paint, wood and paper industry
- Solvent extraction
- Pharmaceuticals industry
- Low pressure range
- Chemicals industry

#### Order-specific production in:

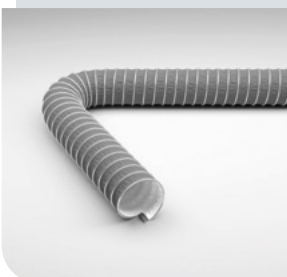
DN 38 - DN 900  
Colour: black  
Stock lengths: see internet  
max. Production lengths:

20 m dep. on DN

#### Temperature Range

-40 °C to +175 °C  
peaks to +190 °C

### Master-Clip PTFE S



Suction & Blower Hose for aggressive media up to +250 °C

#### Applications

- Suction & conveyance of aggressive media, explosive gases & fumes
- Paint mist extraction
- Paint, wood and paper industry
- Solvent extraction
- Pharmaceuticals industry
- Low pressure range
- Chemicals industry

#### Order-specific production in:

DN 50 - DN 900  
Colour: inner lining white, outer lining black  
Stock lengths: see internet  
max. Production lengths:

10 m dep. on DN

#### Temperature Range

-70 °C to +250 °C  
peaks to +270 °C

### Master-Clip PTFE S EL



Suction & Blower Hose for corrosive media up to +250 °C, electroconductive, surface resistance <math>< 10^6 \text{ Ohm}</math>

#### Applications

- Danger zones, which requires electro-conductivity acc. to TRBS
- Suction & conveyance of aggressive media, explosive gases & fumes
- Paint mist extraction
- Paint, wood and paper industry
- Solvent extraction
- Pharmaceuticals industry
- Low pressure range
- Chemicals industry

#### Order-specific production in:

DN 50 - DN 900  
Colour: black  
Stock lengths: see internet  
max. Production lengths:

10 m dep. on DN

#### Temperature Range

-70 °C to +250 °C  
peaks to +270 °C



# Chemical-Resistant Hoses

## Master-Clip KAPTON®



Medium & high temperature hose up to +400 °C, excellent chemical resistance

### Applications

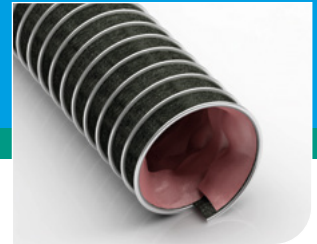
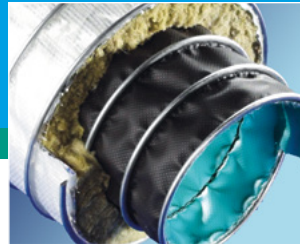
- Suction of aggressive gases at high temperatures
- Exhaust gas routing in gauge pressure & low pressure ranges
- Vehicle & engine manufacturing
- Exhaust gas extraction for high-performance engine test-benches in the Automotive industry

### Order-specific production in:

DN 50 - DN 900  
 Colour: outer lining white, inner lining yellow/gold  
 max. Production lengths: 15 m dep. on DN  
**Temperature Range**  
 -260 °C to +400 °C

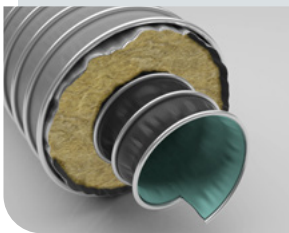
# 10

## Custom-Designed Clip Hoses



### Custom-made designs for preventing temperature loss & for applications in all industrial sectors

## Thermo & Insulating Hoses



Multi-layered hose combinations with specially adapted insulated hoses

### Applications

- Air-conditioning & ventilation systems
- Heat & cold protection
- Machine manufacturing
- Automotive manufacturing

### Order-specific production in:

DN: on request  
 Production lengths: up to 5 m  
**Temperature Range**  
 dep. on materials applied

## Master-Clip Scaled Hoses



Double-layered hose design with scales on inner hose lining

### Applications

- Loading & sieving technology
- Welding fume extraction with greater degree of flying sparks
- Exhaust gas extraction
- Applications, for which abrasive particles or sparks are to be kept away from the external hose material by the internal scale-like design of the hose

### Order-specific production in:

DN: on request  
 Production lengths: 3 m  
**Temperature Range**  
 dep. on materials applied

## Multi-Layered Master-Clip Hoses



Single or multi-layered hose designs with various fabric combinations

### Applications

- Air-conditioning & ventilation systems
- Exhaust gas extraction
- Suction of gaseous media with special requirements for internal & external hose layers
- High Temperature Range
- Chemicals industry

### Order-specific production in:

DN: on request  
 Production lengths: 3 m  
**Temperature Range**  
 dep. on materials applied

## Master-Clip Combo



Combination of different Clip materials

### Applications

- Almost unlimited applications in field of air, gas & exhaust fume extraction/suction

### Order-specific production in:

DN: on request  
 Production lengths: 3 m  
**Temperature Range**  
 dep. on materials applied



## Custom-Designed Clip Hoses

**Our range of materials includes almost all thermoplastics that can be processed**

### Master-Tube PUR 98A



Polyester-Polyurethane Tube: Offers a flexible solution - even under great pressure

#### Application Areas

- Mechanical Engineering
- Robotics and Automation

#### Article Modification

ID: 2 - 11 mm / OD: 4 - 16 mm  
Colors: Natural, Blue, Black  
Other options on request  
Variations: Rolled Goods, Cut Goods, Multi-tube, Spirals or Moulded Form Tubes

#### Temperature Range

-40 °C to +85 °C

### Master-Tube PUR 98A Food



The first food approved PU tube of this type in Europe

#### Application Areas

- Agriculture
- Chemicals
- Food Industry
- Mechanical Engineering
- Robotics and Automation
- Transport

#### Article Modification

ID: 2 - 11 mm / OD: 4 - 16 mm  
Colors: Natural  
Other options on request  
Variations: Rolled Goods or Cut Goods

#### Temperature Range

-40 °C to +85 °C

### XFlame®



Pneumatic tubing made out of Polyether-Polyurethane ... remains steadfast - even when the sparks fly!!

#### Application Areas

- Mechanical Engineering
- Robotics and Automation

#### Article Modification

ID: 2 - 11 mm / OD: 4 - 16 mm  
Colors: Black, Blue, Red, Green, White, ...  
Other options on request  
Variations: Rolled Goods, Cut Goods, Multi-tube, Spirals or Moulded Form Tubes

#### Temperature Range

-40 °C to +90 °C



## XFlame hydro®



Your flexible partner for special applications

### Application Areas

- Mechanical Engineering
- Robotics and Automation

### Article Modification

ID: 2 - 11 mm / OD: 4 - 16 mm  
 Colors: Black, Blue, Red, Green, White, ...  
 Other options on request  
 Variations: Rolled Goods, Cut Goods, Multi-tube, Spiralsised or Moulded Form Tubes

### Temperature Range

-40 °C to +90 °C

## Master-Tube PA 12w



Polyamide tube complies with DIN 73378/74324, ... the solution under pressure under increased temperatures

### Application Areas

- Mechanical Engineering
- Automotive

### Article Modification

ID: 2 - 11 mm / OD: 4 - 16 mm  
 Colors: Natural, Blue, Black  
 Other options on request  
 Variations: Rolled Goods, Cut Goods, Multi-tube, Spiralsised or Moulded Form Tubes

### Temperature Range

-40 °C to +90 °C

## Master-Tube PA 6.12w



Polyamide 6.12w tube ... the best alternative for the Master-Tube PA 6.12w

### Application Areas

- Automotive
- Agriculture
- Painting Technology
- Mechanical Engineering
- Robotics and Automation
- Transport

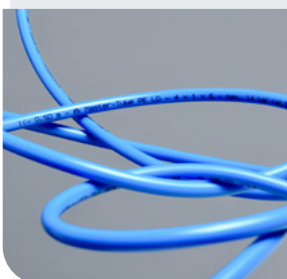
### Article Modification

ID: 2 - 18 mm / OD: 4 - 22 mm  
 Colors: Natural, Blue, Black  
 Other options on request  
 Variations: Rolled Goods, Cut Goods, Multi-tube, Spiralsised or Moulded Form Tubes

### Temperature Range

-40 °C to +90 °C  
 Temporary up to +125 °C

## Master-Tube PE LD



The compressed air tube made of polyethylene / impresses by its chemical resistance

### Application Areas

- Mechanical Engineering
- Robotics and Automation
- Agriculture
- Painting Technology

### Article Modification

ID: 2 - 14 mm / OD: 4 - 18 mm  
 Colors: Natural, Blue, Black  
 Other options on request  
 Variations: Rolled Goods or Cut Goods

### Temperature Range

-30 °C to +70 °C

# 12



## PU-Lined Pipes & Pipe-Bends

### Innovative Wear Protection for Pipes & Pipe-Bends

#### Master-PROTECT® Pipe-bend

PU-lined pipe-bend



#### Applications

- Pneumatic conveying plants

#### Order-specific production in:

DN 50 - DN 200

Colour of lining: beige

Pressure range: PN 6 - PN 10/16

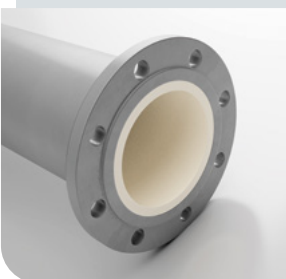
#### Temperature Range

-40 °C to +80 °C

peaks to +110 °C

#### Master-PROTECT® Pipe

PU-lined pipe



#### Applications

- Pneumatic conveying plants

#### Order-specific production in:

DN 50 - DN 200

Colour of lining: beige

Pressure range: PN 6 - PN 10/16

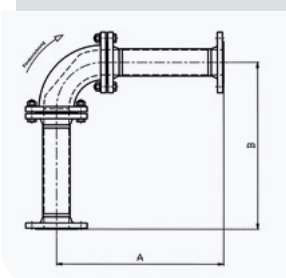
#### Temperature Range

-40 °C to +80 °C

peaks to +110 °C

#### Master-PROTECT® Assembly Set

Connector pipes for Master-PROTECT Pipe-Bends



#### Applications

- Pneumatic conveying plants

#### Order-specific production in:

DN 50 - DN 200

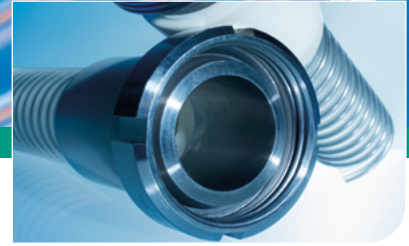
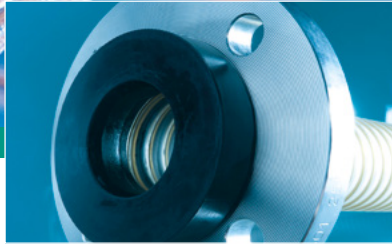
Pressure range: PN 6 - PN 10/16

#### Temperature Range

-40 °C to +80 °C

peaks to +110 °C

# 13.1



## Installation & Connections: Clamps

### Connection solutions for almost any application, from standard connectors to tailor-made & customer-specific connections

#### Clip-Grip Hose Clamp, screwable

Special clamp for  
Master-Clip hoses

#### Applications

Special clamp for all hose types from  
Master-Clip series for mobile & stationary units

#### Available from stock in:

Clamping range from 40/60 mm  
to 900/920 mm  
Strap, bridge & housing made  
from steel



#### Clip-Grip Quick-Fix Clamp

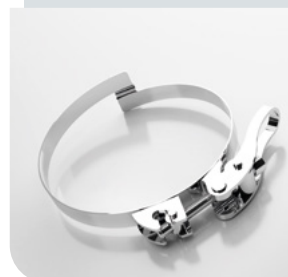
Special clamp for  
Master-Clip hoses

#### Applications

Special clamp for all hose types from  
Master-Clip series for mobile & stationary units

#### Available from stock in:

Clamping range from 75/82 mm  
to 500/507 mm  
Strap, bridge & housing made  
from stainless steel 1.4301



#### Master-Grip Hose Clamp, screwable

Special clamp for  
right-lay hoses

#### Applications

Special clamp for lighter & medium duty,  
right-lay spiral hoses such as Flamex B-se,  
Flamex B-F se, Master-PUR, Master-PVC and  
Master-SANTO

#### Available from stock in:

Clamping range from 35/44 mm  
to 500/520 mm  
Strap, bridge & housing made  
from steel



## Installation & Connections: Clamps

### Master-Grip Quick-Fix Clamp



Special clamp for right-lay hoses

#### Applications

Special clamp for lighter and medium duty, right-lay spiral hoses such as Flamex B-se, Flamex B-F se, Master-PUR, Master-PVC and Master-SANTO

#### Available from stock in:

Clamping range from 75/82 mm to 500/507 mm  
Strap, bridge & housing made from stainless steel 1.4301

### Car-Grip Hose Clamp, screwable



Special clamp for Carflex-Super & Master-PUR STEP hoses

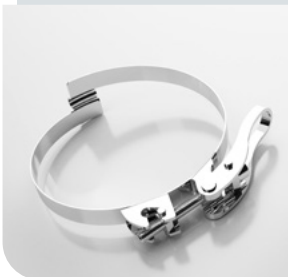
#### Applications

Special clamp for Carflex Super and Master-PUR STEP hoses for mobile & stationary units

#### Available from stock in:

Clamping range from 50/70 mm to 250/270 mm  
Strap, bridge & housing made from steel

### Car-Grip Quick-Fix Clamp



Special clamp for Carflex-Super & Master-PUR STEP hoses

#### Applications

Special clamp for Carflex Super and Master-PUR STEP hoses for mobile & stationary units

#### Available from stock in:

Clamping range from 75/82 mm to 500/507 mm  
Strap, bridge & housing made from stainless steel 1.4301

### Hose Clamp with Worm-Gear



Standard clamp for universal requirements

#### Applications

Special clamp for mounting light hose types onto connector brackets on mobile & stationary units

#### Available from stock in:

Clamping range from 25/40 mm to 500/520 mm  
Strap, bridge & housing made from steel

### Hose Clamp with Bolts



for heavier hoses

#### Applications

Special clamp for connecting medium & heavy duty hoses to connectors on mobile & stationary units

#### Available from stock in:

Clamping range from 32/35 mm to 500/518 mm  
Strap & screw made from galvanised steel

## Installation & Connections: Clamps

### Master-Grip Double Wire Clamp, screw-fitting



Special clamp with double-wire system, stainless steel, for right-winding hoses/ducting

#### Applications

Special clamp for attaching light and medium-weight, right-winding spiral hoses/ducting such as Flamex B-se, Flamex B-F se, Master-PUR Trivolution, Master-PUR Food, Master-PVC and Master-SANTO

#### Available from stock in:

Clamping range from: See internet  
Available on request in other sizes and materials  
Strap, bridge & housing made from stainless steel 1.4301

### Quick-Fix Clamp for Cone Flanges



quick-fix clamps for cone flanges in acc.to DIN 3016

#### Applications

Reductions with cone flanges

- Combiflex PU cone flanges
- Steel piping with cone flanges
- Pipe bends/elbows with cone flanges

for quick connectors from:

- Metal columns with cone flanges

#### Available from stock in:

Clamping range: See internet

### Combiflex Clamp Connection Hinged Clamp



for clamp Connections acc.to DIN 32676

#### Applications

Fitting for solid, liquid and gaseous media in food, pharmaceuticals and chemicals industries, for application for connectors to machines and piping

Materials adhere to the food-grade regulations DIN 32676, provides watertight connections, odourless/tasteless, can be steam-sterilized, good chemical resistance, high tensile strength

#### Available from stock in:

Clamping range: See internet

# 13.2

Installation & Connections:  
Plastic Connectors

**Connection solutions for almost any application,  
from standard connectors to tailor-made  
& customer-specific connections**

## Combiflex PU Cone Flange

acc. to  
DIN 3016



### Applications

- Screwable quick connection system for all Master-PUR L, Master-PUR H & Master-PUR HX hose types
- Screwable and cast-on mountings

### Available in:

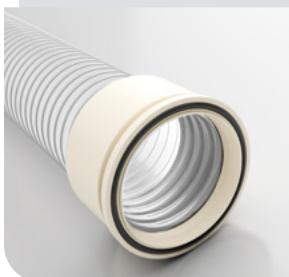
DN 50 - DN 250  
Colour: black

### Temperature Range

-40 °C to +90 °C  
peaks to +125 °C

## Combiflex PU Cone Flange Food

acc. to  
DIN 3016,  
Food grade  
Polyurethane  
acc. to EU 10/2011



### Applications

- Cast-on quick connectors for all Master-PUR Food hose types
- Certified for direct contact with foodstuffs

### Available in:

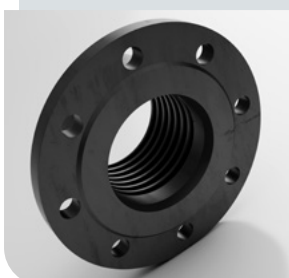
DN 50 - DN 200  
Colour: white

### Temperature Range

-40 °C to +90 °C  
peaks to +125 °C

## Combiflex PU Fixed Flange

for counter-flanges  
acc. to  
DIN 2632 /  
DIN 2633



### Applications

- PU flange for all Master-PUR L, Master-PUR H & Master-PUR HX hose types
- Screwable and cast-on mountings

### Available in:

DN 50 - DN 300  
Colour: black

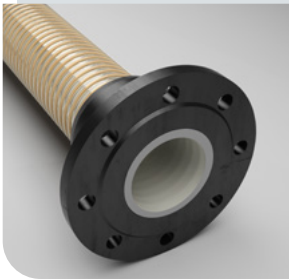
### Temperature Range

-40 °C to +90 °C  
peaks to +125 °C



## Installation & Connections: Plastic Connectors

### Combiflex PU Fixed Flange Inline/ Performance



for counter-flanges  
acc. to  
DIN 2632 /  
DIN 2633 /  
DIN 2673

#### Applications

- Cast-on PU flange for all Master-PUR Inline & Master-PUR Performance hose types

#### Available in:

DN 50 - DN 204

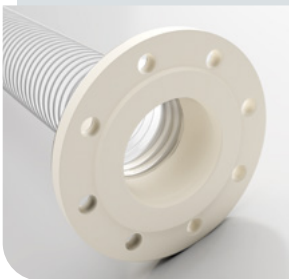
Colour: black

#### Temperature Range

-40 °C to +90 °C

peaks to +125 °C

### Combiflex PU Fixed Flange Food



for counter-flanges  
acc. to  
DIN 2633,  
Food grade  
Polyurethane  
acc. to EU 10/2011

#### Applications

- Cast-on PU flange for all Master-PUR Food hose types
- Certified for direct contact with foodstuffs

#### Available in:

DN 50 - DN 150

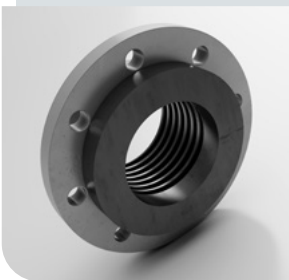
Colour: white

#### Temperature Range

-40 °C to +90 °C

peaks to +125 °C

### Combiflex PU Swivel Flange



for counter-flanges  
acc. to  
DIN 2632 /  
DIN 2632

#### Applications

- PU flange for all Master-PUR L, Master-PUR H & Master-PUR HX hose types
- Screwable and cast-on mountings

#### Available in:

DN 50 - DN 300

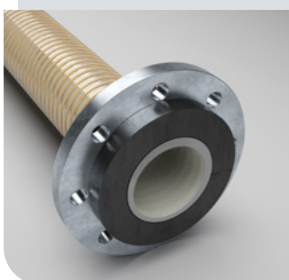
Colour: black

#### Temperature Range

-40 °C to +90 °C

peaks to +125 °C

### Combiflex PU Swivel Flange Inline/Performance



for counter-flanges  
acc. to  
DIN 2632 /  
DIN 2633 /  
DIN 2673

#### Applications

- Cast-on PU swivel flange for all Master-PUR Inline hose types & Master-PUR Performance hose types

#### Available in:

DN 50 - DN 204

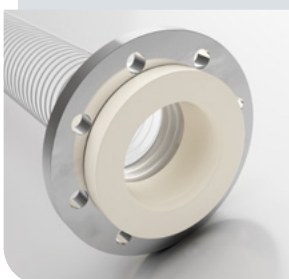
Colour: black

#### Temperature Range

-40 °C to +90 °C

peaks to +125 °C

### Combiflex PU Swivel Flange Food



for counter-flanges  
acc. to  
DIN 2633,  
Food grade  
Polyurethane  
acc. to EU 10/2011

#### Applications

- Cast-on PU flange for all Master-PUR Food hose types.
- Certified for direct contact with foodstuffs

#### Available in:

DN 50 - DN 150

Colour: white

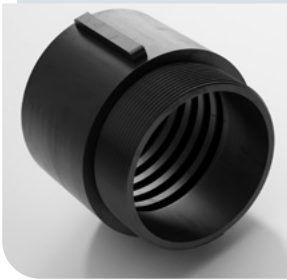
#### Temperature Range

-40 °C to +90 °C

peaks to +125 °C

## Installation & Connections: Plastic Connetors

### Combiflex PU Threaded Sockets



acc. to  
DIN ISO 228

#### Applications

- Screwable threaded connectors for all Master-PUR L, H, HX hose types
- Screwable and cast-on mountings

#### Available in:

DN 50 - DN 150

Colour: black

#### Temperature Range

-40 °C to +90 °C

peaks to +125 °C

### Combiflex PU Threaded Sockets Food



acc. to  
DIN ISO 228,  
Food grade  
Polyurethane  
acc. to EU 10/2011

#### Applications

- Cast-on threaded connectors for all Master-PUR Food hose types
- Certified for direct contact with foodstuffs

#### Available in:

DN 50 - DN 150

Colour: white

#### Temperature Range

-40 °C to +90 °C

peaks to +125 °C

### Streetmaster Cuff



Cast-on/pre-fixed

#### Applications

- Spiral-free connector cuff for all Streetmaster hoses, for water-tight mounting
- Exclusively pre-fixed on all Streetmaster hoses

#### Available in:

DN 200, 225, 250, 280 und 400

Colour: black

#### Temperature Range

-40 °C to +90 °C

peaks to +125 °C

### Combiflex PU-Cuff EL



Electroconductive  
 $\leq 10^4$  Ohm

#### Applications

- Special screw cuff for Master-PUR L/H & Master-PVC L/H hoses
- Industrial vacuum cleaners
- Suction & blower units
- Conveyance units

#### Available in:

DN 32 - DN 100

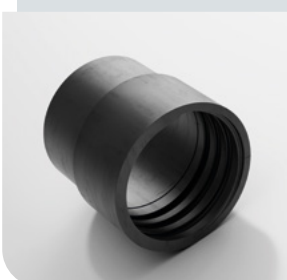
Colour: black

#### Temperature Range

-40 °C to +90 °C

peaks to +125 °C

### Combiflex PU Cuff A



PU End Cuff for  
Master-PUR Hoses

#### Applications

- Special screw cuff for all Master-PUR L/H hose types
- Screwable or cast-on mounting

#### Available in:

DN 125 - DN 300

Colour: black

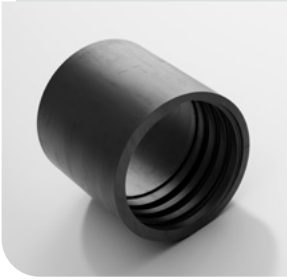
#### Temperature Range

-40 °C to +90 °C

peaks to +125 °C

## Installation & Connections: Plastic Connetors

### Combiflex PU Cuff V



PU End Cuff for Master-PUR Hoses on pipe connections acc. to DIN 2448 / DIN 2458

#### Applications

- Special cuff for all Master-PUR L/H hose types
- Screwable or cast-on mounting

#### Available in:

DN 32 - DN 300

Colour: black

#### Temperature Range

-40 °C to +90 °C

peaks to +125 °C

### Combiflex PU Hose Connector



Screwable PU hose connector for Master-PUR L / H hoses

#### Applications

- Screwable hose connector for the hose types Master-PUR L / H / HX and Master-PVC L / H

#### Available in:

DN 25 - DN 100

Colour: black

#### Temperature Range

-40 °C to +90 °C

peaks to +125 °C

### Cuff for Master-PVC-Flex



Special cuff for Master-PVC Flex hoses

#### Applications

- Industrial vacuum cleaners
- Suction & blower units
- Conveyance units
- Special screw cuff for Master-PVC Flex

#### Available in:

DN 25 - DN 102

Colour: black

#### Temperature Range

0 °C to +70 °C

### Cuff for Master-VAC



Special cuff for Master-VAC hoses, electro-conductive

#### Applications

- Industrial vacuum cleaners
- Suction & blower units
- Conveyance units

#### Available in:

DN 32 - DN 50

Colour: black

#### Temperature Range

0 °C to +70 °C

### PU Hose Sleeve



Special sleeve for use with clamp collars

#### Applications

- Reusable special sleeve for connecting spiral hoses from Masterflex SE hose range

#### Available in:

DN 38 - DN 204

Colour: black

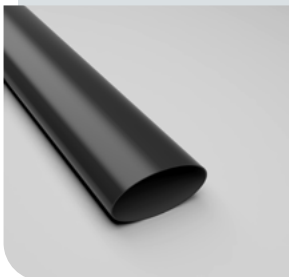
#### Temperature Range

-40 °C to +90 °C

peaks to +125 °C

## Installation & Connections: Plastic Connectors

### Heat Shrink Cuff



For easy connection & sealing of hoses

#### Applications

- Tight connection of spiral hoses or connector brackets with no technical effort required

#### Available from stock in:

Shrink range:

54/18 to 375/265

Colour: black

#### Temperature Range

-55 °C to +110 °C

# 13.3

Installation & Connections:  
Metal Connectors

**Connection solutions for almost any application,  
from standard connectors to tailor-made  
& customer-specific connections**

## Cone Flange with Metal Socket



acc. to  
DIN 3016

### Applications

For quick connections of hoses to:

- Combiflex PU Cone Flanges
- Steel pipes with cone flanges
- Pipe-bends with cone flanges
- Reducers with cone flanges

### Available in:

DN 50 - DN 250

## Cast-On Cone Flange



acc. to  
DIN 3016

### Applications

For quick connections of Combiflex  
PU Cone Flanges to:

- Steel pipes
- Pipe-bends
- Reducers
- Metal socket
- Machines

### Available in:

DN 50 - DN 250

## Quick-Fix Clamp for Cone Flanges



acc. to  
DIN 3016

### Applications

For quick connections of hoses to:

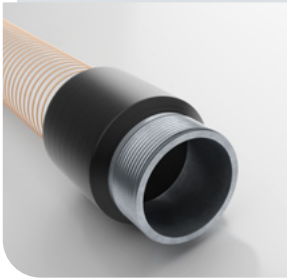
- Combiflex PU Cone Flanges
- Steel pipes with cone flanges
- Pipe-bends with cone flanges
- Reducers with cone flanges
- Metal sockets with cone flanges

### Available in:

DN 50 - DN 250

## Installation & Connections: Metal Connectors

### Combiflex Metal Threaded Sockets



With outer thread  
DIN ISO 228  
- cast-on

#### Applications

- For application for connectors to machines and piping
- For mounting of valves for solid, liquid & gaseous media
- Cast-on metal screw connectors with external thread acc. to DIN ISO 228 for all Master-PUR hoses

#### Available in:

DN 25 - DN 150

Colour: black

#### Temperature Range

-40 °C to +90 °C  
peaks to +125 °C

### Combiflex Clamp Connection Clamps



acc. to DIN 32676  
- cast-on

#### Applications

- Fitting for solid, liquid & gaseous media in:
  - Food industry
  - Pharmaceuticals industry
  - Chemicals industry
- Cast-on clamp connector acc. to DIN 32676 for all Master-PUR Food hoses

#### Available in:

DN 32 - DN 150

#### Temperature Range

-40 °C to +90 °C  
peaks to +125 °C

### Combiflex Clamp Connection Hinged Clamp



For clamp connections  
acc. to  
DIN 32676

#### Applications

- Fitting for solid, liquid & gaseous media in:
  - Food industry
  - Pharmaceuticals industry
  - Chemicals industry
- For application for connectors to machines and piping

#### Available in:

DS 32 - DS 150

### Combiflex Clamp Connection Ring-Seal



For clamp connections  
acc. to  
DIN 32676

#### Applications

- For application for connectors to machines and piping
- Ring-seal for solid, liquid & gaseous media in:
  - Food industry
  - Pharmaceuticals industry
  - Chemicals industry
- Ring seals for hose brackets with clamp connector acc. to DIN 32676

#### Available in:

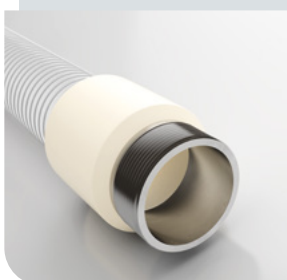
DS 32 - DS 150

Colour: white

#### Temperature Range

-25 °C to +120 °C  
peaks to +150 °C

### Combiflex VA Threaded Socket Food



With outer thread  
acc. to DIN ISO 228  
- cast-on,  
Food grade  
Polyurethane  
acc. to EU 10/2011

#### Applications

- For application for connectors to machines and piping
- for mounting of fittings for solid, liquid & gaseous media
- Cast-on VA threaded sockets with outer thread acc. to DIN ISO 228 for all Master-PUR Food hoses
- Food industry
- Pharmaceuticals industry
- Chemicals industry

#### Available in:

DN 25 - DN 150

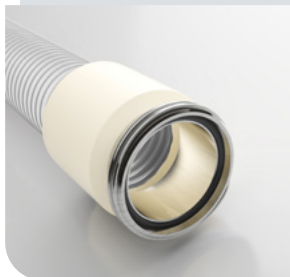
Colour: white / stainless steel

#### Temperature Range

-40 °C to +90 °C  
peaks to +125 °C

## Installation & Connections: Metal Connectors

### Combiflex Dairy Fitting Threaded Hose Sockets



acc. to DIN 11851  
- cast-on,  
Food grade  
Polyurethane  
acc. to EU 10/2011

#### Applications

- Fitting for solid, liquid & gaseous media in:
  - Food industry
  - Pharmaceuticals industry
  - Chemicals industry
- Cast-on pipe screw connection acc. to DIN 11851 for Master-PUR Food hoses
- For application for connectors to machines and piping

#### Available in:

DS 32 - DS 150

#### Temperature Range

-40 °C to +90 °C  
peaks to +125 °C

### Combiflex Dairy Fitting Cone Sockets



with locknut acc. to  
DIN 11851  
- cast-on/pre-fixed,  
Food grade  
Polyurethane  
acc. to EU 10/2011

#### Applications

- Cast-on pipe screw connection acc. to DIN 11851 for Master-PUR Food hoses
- Fitting for solid, liquid & gaseous media in:
  - Food industry
  - Pharmaceuticals industry
  - Chemicals industry

#### Available in:

DS 32 - DS 150

#### Temperature Range

-40 °C to +90 °C  
peaks to +125 °C

### Combiflex Dairy Fitting Ring-Seal



for threaded sockets  
acc. to  
DIN 11851

#### Applications

- For application for connectors to machines and piping
- Ring seals for screw connectors acc. to DIN 11851
- Ring-seals for solid, liquid & gaseous media in:
  - Food industry
  - Pharmaceuticals industry
  - Chemicals industry

#### Available in:

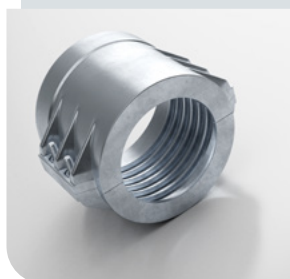
DS 32 - DS 150

Colour: blue

#### Temperature Range

-25 °C to +120 °C  
peaks to +150 °C

### Clamp Collars, screwed



acc. to  
DIN EN 14420-3

#### Applications

- Versatile applications for spiral hoses from the Masterflex SE hose range when using PU hose sleeves

#### Available in:

DN 38 - DN 200

### PU Hose Sleeve



Special sleeve for use  
with clamp collars

#### Applications

- Reusable special sleeve for connecting spiral hoses from Masterflex SE hose range

#### Available in:

DN 38 - DN 204

Colour: black

#### Temperature Range

-40 °C to +90 °C  
peaks to +125 °C

## Installation & Connections: Metal Connectors

### Hose Connector



Sheet steel connectors for lightweight & medium-weight hoses

#### Applications

- Extension, coupling & connection of light to medium weight hoses

#### Available in:

DN 50 - DN 900

### Hose Reducer, symmetrical



Reducer for lightweight & medium-weight hoses

#### Applications

- Extension, coupling and connection of light to medium weight hoses

#### Available in:

DN 80/50 - DN 300/250



Notes:







Masterflex SE  
Willy-Brandt-Allee 300  
45891 Gelsenkirchen  
Germany  
Tel. +49 209 97077-0  
Fax +49 209 97077-33  
www.MasterflexGroup.com  
info.masterflex@MasterflexGroup.com  
A MASTERFLEX GROUP COMPANY

 **MASTERFLEX**  
Connecting Values